



15^{de} PRODUKSIEVEILING

Donderdag, 28 Augustus 2025

Katalogus



Baie welkom!

Met groot waardering en dankbaarheid heet ons u welkom by die
2025 Zimeyer Boerdery Produksieveiling.

Hierdie katalogus verteenwoordig nie net die genetika wat aangebied word nie, maar ook die jare se toewyding, noukeurige seleksie en passie wat ons belê het om 'n kudde te bou waarop ons werklik trots is.

By Zimeyer Boerdery is ons teelrigting gegrond op die beginsels van funksionele, vrugbare en aanpasbare vee wat onder praktiese omstandighede presteer.

Al die bulle wat in hierdie veiling aangebied word, is prestasiegetoets, wat verseker dat hulle die hoogste standarde van effektiwiteit, doeltreffendheid en strukturele korrektheid handhaaf. Dit bied aan kopers die sekerheid dat hulle belê in bulle wat werklike waarde sal toevoeg.

Ons is opreg dankbaar vir die lojale ondersteuning van ons kliënte en vriende, en ons verwelkom ook nuwe kopers wat ons visie deel om deur kwaliteit genetika vooruitgang te bewerkstellig.

U vertrou en samewerking motiveer ons om ons standarde voortdurend te verhoog en om vee te lewer wat 'n verskil in die veld maak.

Terwyl u deur hierdie katalogus blaai, vertrou ons dat u bulle en vroulike diere sal vind wat u teelprogram kan versterk en positief tot u boerdery kan bydra. Dankie dat u tyd geneem het om ons aanbod te oorweeg.

*Met waardering,
Zimeyer Boerdery*

Inleiding / Introduction

Die doel van die veilingsreëls is om so ver as moontlik te verseker dat alle Simbras wat per veiling aangebied word steeds voldoen (al was hulle voorheen gekeur) aan die rasstandaarde en 'n aanvaarbare kriteria wat betref vrugbaarheid en/of reproduksie asook sekere gesondheidsvereistes, en is van toepassing op alle openbare-/aanlyn-/katalogusveilings. Alle Simbras so verkoop se verkoop vind dus plaas onderhewig aan die reëls van die Genootskap. Geregistreeerde Simbras wat nie aan die reëls voldoen nie, mag nie per veiling te koop aangebied word nie.

Daar is drie kategorieë in 'n amptelike Simbra veilingskatalogus:

- A. **Geregistreeerd:** Geregistreeerde bulle (met S-brand op linker skouer), en geregistreeerde vroulike diere en kalfboek diere onder 12 maande of sogende kalwers.
- B. **Cum verse:** Verse wat reeds as Cum diere opgeneem is in die Simbra kuddeboekstelsel.
- C. **Kommersiële diere:** Simbra-tipe vroulike diere wat fenotopies van so 'n gehalte is dat hulle in aanmerking kan kom om as Cum diere opgeneem te word.

Dit is die verkopers se verantwoordelikheid om seker te maak dat alle inligting van verkoopsdiere volledig angebring is op die stelsel. Inligting van veilings diere, lot nommers en kommentaar moet die kantoor minstens 6 weke voor die veilings datum bereik. Inligting moet ingedien word per e-pos in die voorgeskrewe formaat. Een proef katalogus sal opgestel word, wat alle uitstaande inligting sal aandui. Teler het 3 werksdae om regstellings en uitstaande inligting per e-pos aan die kantoor te stuur. Tweede proef sal voorgestel word vir goedkeuring deur verkoper waarna katalogus gefinaliseer sal word.

Dit is dan ook die verkoper se verantwoordelikheid om seker te maak dat die Veilingshuis die Kopersrol en Veilings statistieke binne 7 dae na afhandeling van die veiling aan die Genootskap stuur sodat die kantoor die nodige Oordragte en Statistiese Rekords kan voltooi. Kontak kantoor per e-pos, office@simbra.org, indien u meer inligting rondom die veilings statistieke benodig.

The purpose of the auction rules is to ensure as far as possible that all Simbras that are offered at auctions still meet (even if they were previously inspected) the breed standards and an acceptable criterion in terms of fertility and/or reproduction as well as certain health requirements and applies to all public/online/catalogue auctions. The selling of all Simbras sold in this manner, therefore takes place subject to the rules of the Society. Registered Simbras that do not comply with the rules may not be offered for sale on auction.

There are three sections in an official Simbra auction catalogue:

- A. **Registered:** Registered bulls (with S brand on left shoulder), registered females, and calfbook animals under 12 months or suckling calves.
- B. **Cum heifers:** Heifers that have already been recorded as Cum animals in the Simbra herdbook system.
- C. **Commercial animals:** Simbra type female animals that are phenotypically of such quality that they can be considered as Cum animals.

It is the sellers' responsibility to make sure that all information of sale animals is fully integrated into the system. Information for auction animals, lot numbers and comments must be submitted to the office at least 6 weeks prior to the auction date. Information must be submitted via e-mail in the prescribed format. One draft catalogue will be drawn up, which will indicate all outstanding information. Breeder has 3 business days to e-mail corrections and outstanding information to the office. Second draft will be proposed for seller approval after which catalogue will be finalised.

It is then also the seller's responsibility to ensure that the Auction House send the Buyers' Roll and Auction statistics to the Society within 7 days of the completion of the auction so that the office can complete the necessary Transfers and Statistical Records. Contact the office via e-mail at office@simbra.org if you need more information about the auction statistics.



Algemeen / General

- 1.1. Alle diere moet maksimum 30 dae voor 'n veiling deur 'n geakkrediteerde inspekteur/keurder wie op die veilingspaneel dien, en wie sal optree as beskermheer, gekeur word.
- 1.2. Bulle moet gepunt word volgens die Simbra liniêre klassifikasie stelsel, en vroulike diere moet 'n geheelbeeld punt kry.
 - 1.2.1. Diere wat nie voldoen aan minimumstandaarde nie mag nie te koop aangebied word nie.
- 1.3. Alle vaars wat kalwers (in aanmerking vir registrasie) gaan verwek wat gebore word vanaf 1 September 2022, moet gegenotipeer wees en 'n SNP genotipe op rekord hê alvorens 'n dragtige vers of koei met 'n jong kalf hierin na verwys, op 'n veiling aangebied mag word.
- 1.4. Alle Simbras wat per openbare veiling aangebied word, word verkoop onderhewig aan die Veilingsreëls van die Genootskap.
- 1.5. Amptelike veilingspamflet is onderhewig aan goedkeuring voor dit op sosiale media en webtuiste gepubliseer mag word, en moet die amptelike Simbra logo vertoon (waar diere van meer as een ras adverteer word en op dieselfde veiling aangebied word is die Simbra logo nie verpligtend nie).
 - 1.5.1. Indien die linkerskouer van 'n bul op die pamflet getoon word, moet die S-brand op die skouer teenwoordig wees.
 - 1.5.2. Diere wat op die veilingspamflet verskyn, moet in veilingskondisie wees en aan fenotipiese rasstandaarde voldoen – die veilingspamflet screening paneel sal besluit of die veilingspamflet aan hierdie vereiste voldoen word.

-
- 1.1. *All animals must be inspected a maximum of 30 days before an auction by an accredited inspector/selector from the auction panel, who will act as patron of that specific auction.*
 - 1.2. *Bulls must be scored according to the Simbra linear classification system, and females must receive an overall appearance score.*
 - 1.2.1. *Animals that do not meet minimum standards may not be offered for sale.*
 - 1.3. *All bulls that will sire and have sired calves (eligible for registration) born from 1 September 2022 must be genotyped and have a SNP genotype on record before a pregnant heifer or cow with young calf referred to herein is offered at auction.*
 - 1.4. *All Simbras offered on public auction are sold subject to the Auction Rules of the Society.*
 - 1.5. *Auction flyers/pamphlets are subject to approval before they may be published on social media and the website and must display the official Simbra logo (where animals of more than one breed are advertised and offered at the same auction, the Simbra logo is not compulsory).*
 - 1.5.1. *If the left shoulder of a bull is shown on the pamphlet, the S-brand must be present on the shoulder.*
 - 1.5.2. *Animals presented on the auction pamphlet must be in auction condition and meet phenotypic breed standards – the auction pamphlet screening panel will decide if this requirement is met.*

Veilingsreëls / Auction Rules

- 2.1. Die verkoper moet by ondertekening van hierdie veilingsreëls skriftelik bewys indien dat sy veilingsdiere binne 90 dae voor die veiling skoon getoets is vir TB en alle vroulike diere wat reeds gekalf het BM skoon getoets het, of 'n CA3 sertifikaat/veeartssertifikaat indien wat spesifiseer dat al sy diere skoon getoets is binne die laaste 12 maande. Alle vroulike diere wat vir veilings aangebied word, moet met RB51/S19 teen Bruselose ingeënt wees. Aangesien Namibië vry verklaar is van Brusellose en beestering word daar nie vereis dat beeste daarvoor getoets word nie.
- 2.2. Diere onder 1 jaar op dag van veiling is opgeneem as kalfboek en sal aan die koper oorgedra word op die verkoper se koste. Lede van die Genootskap kan hierdie diere tussen 1 en 3jarige ouderdom aanbied vir volle registrasie in die Kuddeboek.
- 2.3. Die verkoper het die volgende "Verkopersverklaring" onderteken en ingedien:
 - 2.3.1. Dat die diere wat aangebied word getatoeëer en gekontroleer is, en dat dit ooreenstem met die rekords van die genootskap. Indien die koper binne 30 dae na die veiling bewys kan lewer dat die dier nie getatoeëer is nie of verkeerdlik getatoeëer is, sal **waarborg 6** van toepassing wees.
 - 2.3.2. Dat alle bulle deur 'n veearts of geregistreerde veeartsenykundige tegnoloog as vrugbaar gesertifiseer is in die voorgeskrewe formaat nie langer as 90 dae voor die veiling. Vrugbaarheid (met spesifieke verwysing na,



motiliteit, morfologie en skrotumomtrek) moet geëvalueer word en op die verslag gespesifiseer word en deur die verkoper gewaarborg word tot 7 kalender dae na die veilingsdatum of in sekere spesiale gevalle 7 dae nadat die koper die bul in ontvangs geneem het. Oorspronklike vrugbaarheidssertifisering moet vir 1 jaar na veilingsdatum by die verkoper beskikbaar wees. Indien die koper binne 7 dae na die veiling (of in spesiale gevalle soos vooraf gereël met die verkoper vanaf die ontvangs van die bul) 'n veeartssertifikaat voorle wat die teendeel bewys sal **waarborg 6** van toepassing wees.

2.3.3. Enige waarborge aangaande die bevriësing van semen sal gemaak word deur 'n aparte ooreenkoms tussen die koper en verkoper.

2.3.4. Dat alle bulle skoon getoets is vir Trichomoniasis en Vibriose. Dit moet op die Vrugbaarheidssertifikaat aangedui word.

2.3.5. Dat alle vaars van kalwers wat in aanmerking kom vir kalfboek registrasie en wat nog nie by die Genootskap op rekord is nie, en bulle waarvan koeie dragtig is, asook semen, 'n SNP genotiperingsprofiel en DNS vaderskap bevestiging op rekord het en dat die bulle geregistreer is.

2.3.6. Dat diere wat as dragtig aangebied word, **deur 'n veearts of geregistreerde veeartsenykundige tegnoloog as dragtig gesertifiseer is** en sodanige sertifisering met navraag by die verkoper beskikbaar is tot 1 jaar na die veilingsdatum.

2.3.6.1. Indien hierdie dragtig gesertifiseerde diere binne 48 uur na die veiling as nie-dragtig deur 'n geregistreerde veearts of veeartsenykundige tegnoloog gesertifiseer word, sal **waarborg 6** van toepassing wees.

2.3.6.2. As 'n vroulike dier as "oop" of "nie-dragtig" verkoop word en binne 30 dae na die veiling as dragtig deur 'n veearts gesertifiseer word, sal **waarborg 6** van toepassing wees.

2.3.7. Diere se heuphoogtes en raamgrootte punte sal op kataloguste verskyn vanaf 1 Augustus 2025.

2.3.8. Diere wat in een van hierdie 3 dele van die katalogus verskyn, moet aan die volgende reëls voldoen:

A. Deel A van Katalogus is GEREGETREERDE SIMBRAS:

- 1) Oop verse mag slegs aangebied word tot op die ouderdom van 30 maande.
- 2) 'n Dragtige vers wat aangebied word moet voor of op 39 maande kalf.
- 3) 'n Koei sonder kalf aan voet moet dragtig gesertifiseer wees, en die verwagte kalfdatum mag nie later as 18 maande na haar laaste kalfdatum wees nie, **en** so 'n koei mag nie vir langer as 18 maande "oop" gewees het tussen kalwings nie.
- 4) Diere wat dragtig is uit 'n MultiSire groep; hier moet die MultiSire bulle geïdentifiseer wees, hierdie bulle moet ook aan al die reëls van die genootskap voldoen (vaderskap bevestiging, 200dae gewig op rekord, geSNP genotipeer en gekeur wees) alvorens hulle as deel van so 'n groep kan kwalifiseer.
- 5) Cum diere moet ten minste twee of meer kalwings na registrasie gehad het, en indien sonder kalf aan voet moet dragtig gesertifiseer wees, verwagte kalfdatum mag nie later as 18 maande na haar laaste kalfdatum wees nie, **en** so 'n koei mag nie vir langer as 18 maande "oop" gewees het tussen kalwings nie.
- 6) Eiselskenkers - Moet dragtig wees binne 18 maande sedert laaste spoeldatum.
- 7) Simbra bulle moet 22 maande of ouer wees, moet geregistreer wees, dus die S-brand dra op die linker skouer as waarborg dat die bul voldoen aan minimum fenotipiese rasstandaarde, 'n 200 dae gewig op rekord hê en vaderskap van die bul deur middel van DNS bevestig is.

B. Deel B van Katalogus is CUM SIMBRA VERSE:

- 1) Teler/verkoper moet die geboortedatum van die dier bevestig het.
- 2) Oop Cum verse mag slegs aangebied word tot op 30 maande.
- 3) 'n Dragtige Cum vers wat aangebied word, moet voor of op 39 maande kalf.
- 4) Diere wat onder hierdie afdeling verkoop word, moet duidelik gemerk en getatoeër word met die verkoper se kuddelletters, jaar van geboorte en unieke volgnummer.

C. Deel C van katalogus bestaan uit SIMBRA TIPE vroulike diere:

- 1) Simbra Tipe diere wat nie voldoen aan die bostaande twee afdelings nie, kan hier verkoop word.
- 2) Die diere se gehalte moet van so 'n aard wees dat hulle as Cum F0 diere in die Simbra kuddeboekstelsel opgeneem kan word.



2.4 Waarborg 6: Indien die nodige bewyse binne die betrokke periode (verwys 2.3.1, 2.3.2. & onderafdelings 2.3.6.1 en 2.3.6.2) skriftelik aan die verkoper voorsien word dat enige van die diere gekoop nie voldoen aan die reëls soos hierbo gestipuleer nie, sal die verkoper, met die keuse van die koper, enige dier tersprake vervang met 'n ander dier van gelyke waarde of die aankoopprys terugbetaal.

-
- 2.1.** *The seller must, upon signing these auction rules, be able to submit proof in writing that his auction animals have been tested clean for TB within 90 days before the auction and all female animals that have already calved have tested clean for CA or submit a CA3 certificate/vet certificate that specifies that all animals have been tested clean within the last 12 months. All females offered on auction must be vaccinated against Brucellosis with RB51/S19. Since Namibia has been declared free from Brucellosis and Cattle TB, sellers do not have to test animals for these diseases.*
- 2.2.** *Animals under 1 year on date of auction are recorded as calfbook and will be transferred to the buyer at the sellers' expense. Members of the Society can offer these animals between 1 and 3 years of age for full registration in the herdbook.*
- 2.3.** *The seller has signed and submitted the "Sellers' Declaration":*
- 2.3.1.** *That the animals offered are tattooed and checked, and that the tattoos correspond to the records of the Society. If the buyer can provide proof within 30 days of the auction that the animal is not tattooed or has been wrongly tattooed, **guarantee 6** will apply.*
- 2.3.2.** *That all bulls, must have been certified as fertile by a veterinarian or registered veterinary technologist in the prescribed format no longer than 90 days before the auction. Fertility (with reference to, motility, morphology, and scrotal circumference) must be evaluated and specified on the report and is guaranteed by the seller until 7 calendar days after the auction date or in certain special cases 7 days after the buyer has received delivery of the bull. Original fertility certification must be available from the seller for 1 year after the auction date. If the buyer presents a veterinary certificate proving the contrary within 7 days of the auction (or in special cases as previously arranged with the seller from the receipt of the bull), **guarantee 6** will apply.*
- 2.3.3.** *Any guarantees regarding the freezing of semen will be made by a separate agreement between the buyer and seller.*
- 2.3.4.** *That all bulls must be tested clean for Trichomoniasis and Vibriosis. This must be indicated on the Fertility Certificate.*
- 2.3.5.** *That all sires of calves that are eligible for calfbook registration and that are not yet on record with the Society, and bulls from which cows are in-calf, as well as semen, must have a SNP genotyping profile and DNA Sire verification on record. Bulls must be registered.*
- 2.3.6.** *That any female offered as in-calf must be certified in-calf by a veterinarian or registered veterinary technologist and such certification is available upon request from the seller up to one year after the auction date.*
- 2.3.6.1.** *If these certified "in-calf" animals are certified not in-calf by a registered veterinarian within 48 hours of the auction, **guarantee 6** will apply.*
- 2.3.6.2.** *If a female animal is sold as "open" or "not in-calf" and is certified in-calf by a veterinarian within 30 days of the auction, **guarantee 6** will apply.*
- 2.3.7.** *Animals' hip heights and frame scores will be displayed in the catalogue from 01 August 2025.*
- 2.3.8.** *Animals appearing in one of these three parts of the catalogue must comply with the following rules:*
- A. Part A of Catalogue are REGISTERED SIMBRAS:**
- 1) Open heifers may only be offered up to the age of 30 months.*
 - 2) A heifer in calf must calve before or at 39 months.*
 - 3) A cow without a calf at foot must be certified in-calf, and the expected calving date must not be later than 18 months after her last calving date, and such a cow must not have been "open" for more than 18 months between calves.*
 - 4) Animals that are in-calf from a MultiSire group; here the MultiSire bulls must be identified, these bulls must also comply with all the rules of the society (Sire Verification, 200-day weight on record, SNP genotyped and inspected) before they can qualify as part of such a group.*
 - 5) Cum animals must have had at least two or more calvings after registration, and if without a calf at foot must be certified in-calf, and the expected calving date must not be later than 18 months after her last calving date, and such a cow must not have been open for more than 18 months between calvings.*
 - 6) Embryo donors must be in-calf within 18 months of last flush date.*



- 7) *Simbra bulls must be 22 months or older, must be registered, thus wearing the S-brand on the left shoulder as a guarantee that the bull meets the minimum phenotypic breed standards, have a 200-day weight on record and be sire verified through DNA verification.*

B. Part B of Catalogue are CUM SIMBRA HEIFERS:

- 1) *Breeder/seller must have confirmed the birth date of the animal.*
- 2) *Open Cum heifers may only be offered up to the age of 30 months.*
- 3) *A Cum heifer offered as in-calf, must give birth before or at 39 months of age.*
- 4) *Animals sold under this section must be clearly marked and tattooed with the seller's herd letters, year of birth and unique serial number.*

C. Part C of catalogue consists of SIMBRA TYPE females:

- 1) *Simbra Type animals that do not meet the above standards can be sold here.*
- 2) *The qualifying animals must be of such a nature that they can be entered as CUM F0 animals in the Simbra herdbook system.*

2.4. Guarantee 6: *If the necessary evidence is provided to the seller in writing within the relevant period (ref. 2.3.1, 2.3.2. & subsections 2.3.6.1 and 2.3.6.2) that any of the animals purchased do not comply with the rules as stipulated above, the seller will, at the option of the buyer, replace any animal in question with another animal of equal value or refund the purchase price.*

DIE RAAD EN PERSONEEL VAN DIE SIMBRA BEESTELERSGENOOTSKAP VAN SUIDELIKE AFRIKA WORD GEVRYWAAR TEEN ENIGE EISE VAN KOPERS WAT MAG VOORTVLOEI UIT VERKOPE OP VEILINGS. DIE SIMBRA BEESTELERSGENOOTSKAP WORD GEVRYWAAR TEEN ENIGE SKADE WAT ONS OF ENIGE DERDE PARTY MAG LEI AS GEVOLG WATTER REDE OOKAL UIT HOOFDE VAN VERHANDELINGS VAN SIMBRAS OP VEILINGS.



ZIMEYER 17 8										ZM178					Lot. 1																																																																																	
ZIMEYER BOERDERY (PTY) LTD H/a LOVEDALE BOERDERY, POSBUS 5 LINDLEY 9630 TEL:27823348906															SIMBRA																																																																																	
Birth Date: 19/03/2017					Simbradex: 75					Star:					Reg. Status: REG					FEMALE/VROULIK																																																																												
Age: 101 months					Days last calved: 457					ICP: 528					Inspection Date: 25/04/2020					Reg. No: 172377525																																																																												
Herdbook: SP					Calvings: 4					Calving dates: 28/05/2024 05/11/2022 22/09/2021 26/01/2020																																																																																						
Horn: Polled																																																																																																
SIRE / VAAR:					DAM / MOER:																																																																																											
2144815 LM FULLHOUSE 5L/133 Polled 2341008 PRR PREVAIL 77AS +2063422 PRR D.Q. 808J ZM135C ZIMEYER 13-5 Polled ZM062C ZIMEYER KAREL ZM0916 ZIMEYER 016/09 Horned ZM065 ZIMEYER HELGA (P) Polled					ZM0614C ZIMEYER ELKAN 2 (P) Polled ZM0945 ZIMEYER 045/09 Polled ZM0413C ZIMEYER BETSA ZM1368 ZIMEYER 13-68 Horned Simbradex: 79 Calving dates: 19/03/2017 ICP: ZM0452C ZIMEYER MARKUS ZM0865C ZIMEYER MAGGI *** Horned DDD9813B BELLEOMBRE DDD98 13B ***																																																																																											
July 2025 South African Simbra BREEDPLAN office@simbra.org																																																																																																
<table border="1" style="width:100%; border-collapse: collapse; text-align: center;"> <thead> <tr> <th>2024</th> <th>BW</th> <th>200</th> <th>400</th> <th>600</th> <th>MCW</th> <th>MILK</th> <th>SC</th> <th>DC</th> <th>EMA</th> <th>Rib</th> <th>Rump</th> <th>IMF%</th> <th>RBV%</th> <th>NFI</th> <th>SRF</th> <th>SRG</th> <th>SRW</th> </tr> </thead> <tbody> <tr> <td>EBV</td> <td>+1.5</td> <td>+22</td> <td>+31</td> <td>+40</td> <td>+39</td> <td>+3</td> <td>+1.8</td> <td>+14.3</td> <td>-0.4</td> <td>-0.5</td> <td>-0.6</td> <td>+0.3</td> <td>+0.2</td> <td>+0.20</td> <td>-108</td> <td>-283</td> <td>-284</td> </tr> <tr> <td>ACC</td> <td>77%</td> <td>74%</td> <td>71%</td> <td>75%</td> <td>72%</td> <td>59%</td> <td>47%</td> <td>40%</td> <td>40%</td> <td>53%</td> <td>53%</td> <td>42%</td> <td>45%</td> <td>43%</td> <td></td> <td></td> <td></td> </tr> <tr> <td>BREED</td> <td>+1.2</td> <td>+17</td> <td>+25</td> <td>+32</td> <td>+35</td> <td>+4</td> <td>+0.8</td> <td>-1.9</td> <td>+0.4</td> <td>-0.4</td> <td>-0.5</td> <td>+0.0</td> <td>+0.3</td> <td>-0.01</td> <td>+398</td> <td>+236</td> <td>+234</td> </tr> </tbody> </table>															2024	BW	200	400	600	MCW	MILK	SC	DC	EMA	Rib	Rump	IMF%	RBV%	NFI	SRF	SRG	SRW	EBV	+1.5	+22	+31	+40	+39	+3	+1.8	+14.3	-0.4	-0.5	-0.6	+0.3	+0.2	+0.20	-108	-283	-284	ACC	77%	74%	71%	75%	72%	59%	47%	40%	40%	53%	53%	42%	45%	43%				BREED	+1.2	+17	+25	+32	+35	+4	+0.8	-1.9	+0.4	-0.4	-0.5	+0.0	+0.3	-0.01	+398	+236	+234										
2024	BW	200	400	600	MCW	MILK	SC	DC	EMA	Rib	Rump	IMF%	RBV%	NFI	SRF	SRG	SRW																																																																															
EBV	+1.5	+22	+31	+40	+39	+3	+1.8	+14.3	-0.4	-0.5	-0.6	+0.3	+0.2	+0.20	-108	-283	-284																																																																															
ACC	77%	74%	71%	75%	72%	59%	47%	40%	40%	53%	53%	42%	45%	43%																																																																																		
BREED	+1.2	+17	+25	+32	+35	+4	+0.8	-1.9	+0.4	-0.4	-0.5	+0.0	+0.3	-0.01	+398	+236	+234																																																																															
Traits Observed: BWT 200WT(x2) 600WT(x2) MWT DC Seller's remarks / Verkoper se kommentaar: 25 weke dragtig; Poenskop															R _____																																																																																	

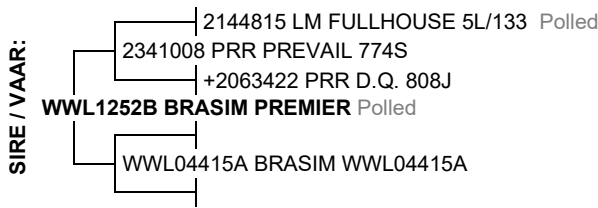
ZIMEYER 18 20 KOMMERSIEEL										ZM1820					Lot. 2									
ZIMEYER BOERDERY (PTY) LTD H/a LOVEDALE BOERDERY, POSBUS 5 LINDLEY 9630 TEL:27823348906															SIMBRA									
Birth Date: 01/10/2018					Simbradex: 49					Star:					Reg. Status: REG					FEMALE/VROULIK				
Age: 82 months					Days last calved: 449					ICP: 803					Inspection Date: 25/04/2020					Reg. No: 172558637				
Herdbook: SP					Calvings: 2					Calving dates: 05/06/2024 25/03/2022														
Horn: Polled																								
SIRE / VAAR:					DAM / MOER:																			
ZM0614C ZIMEYER ELKAN 2 (P) Polled ZM1050 ZIMEYER 050/10 PP PP ZM045C ZIMEYER ANN ZM1456 ZIMEYER 14-56 Polled ZM0452C ZIMEYER MARKUS ZM0865C ZIMEYER MAGGI *** Horned DDD9813B BELLEOMBRE DDD98 13B					ZM003C ZIMEYER VISSER Polled ZM0443 ZIMEYER GILEAD 3 Polled ZM956C ZIMEYER GISELA ZM096 ZIMEYER 006/09 Horned Simbradex: 42 Calving dates: 04/10/2021 07/03/2020 01/10/2018 13/10/2015 ICP: 649 26/03/2014 15/11/2012 DM987C KAMAB DM987C ZM0438 ZIMEYER KARIN 6 WC9334C WISP-WILL WC9334F3 ***																			
Traits Observed: Seller's remarks / Verkoper se kommentaar: 21 weke dragtig; Poenskop															R _____									

ZIMEYER 18 28										ZM1828B					Lot. 3																																																																																	
ZIMEYER BOERDERY (PTY) LTD H/a LOVEDALE BOERDERY, POSBUS 5 LINDLEY 9630 TEL:27823348906															SIMBRA																																																																																	
Birth Date: 13/12/2018					Simbradex: 53					Star:					Reg. Status: REG					FEMALE/VROULIK																																																																												
Age: 80 months					Days last calved: 436					ICP: 812					Inspection Date: 25/04/2020					Reg. No: 172558710																																																																												
Herdbook: F2					Calvings: 2					Calving dates: 18/06/2024 29/03/2022																																																																																						
Horn: Polled																																																																																																
SIRE / VAAR:					DAM / MOER:																																																																																											
ZM0614C ZIMEYER ELKAN 2 (P) Polled ZM1050 ZIMEYER 050/10 PP PP ZM045C ZIMEYER ANN ZM1456 ZIMEYER 14-56 Polled ZM0452C ZIMEYER MARKUS ZM0865C ZIMEYER MAGGI *** Horned DDD9813B BELLEOMBRE DDD98 13B					*SDJ0539SI AI-AI BAKKES [SI] *ZM08811SI ZIMEYER DARIUS ZM1524A ZIMEYER 15-24 Simbradex: 88 Calving dates: 15/03/2022 02/03/2021 13/03/2020 13/12/2018 ICP: 396 *SDJ0539SI AI-AI BAKKES [SI] ZM113A ZIMEYER ZM113A *ZM06711BB ZIMEYER CAITLIN [BRA]																																																																																											
July 2025 South African Simbra BREEDPLAN office@simbra.org																																																																																																
<table border="1" style="width:100%; border-collapse: collapse; text-align: center;"> <thead> <tr> <th>2024</th> <th>BW</th> <th>200</th> <th>400</th> <th>600</th> <th>MCW</th> <th>MILK</th> <th>SC</th> <th>DC</th> <th>EMA</th> <th>Rib</th> <th>Rump</th> <th>IMF%</th> <th>RBV%</th> <th>NFI</th> <th>SRF</th> <th>SRG</th> <th>SRW</th> </tr> </thead> <tbody> <tr> <td>EBV</td> <td>+0.3</td> <td>+18</td> <td>+27</td> <td>+26</td> <td>+9</td> <td>+5</td> <td>+1.4</td> <td>+6.0</td> <td>-0.8</td> <td>+0.0</td> <td>+0.3</td> <td>+0.4</td> <td>-0.2</td> <td>-0.06</td> <td>+598</td> <td>+148</td> <td>+192</td> </tr> <tr> <td>ACC</td> <td>63%</td> <td>62%</td> <td>60%</td> <td>64%</td> <td>63%</td> <td>50%</td> <td>46%</td> <td>30%</td> <td>36%</td> <td>46%</td> <td>46%</td> <td>35%</td> <td>38%</td> <td>37%</td> <td></td> <td></td> <td></td> </tr> <tr> <td>BREED</td> <td>+1.2</td> <td>+17</td> <td>+25</td> <td>+32</td> <td>+35</td> <td>+4</td> <td>+0.8</td> <td>-1.9</td> <td>+0.4</td> <td>-0.4</td> <td>-0.5</td> <td>+0.0</td> <td>+0.3</td> <td>-0.01</td> <td>+398</td> <td>+236</td> <td>+234</td> </tr> </tbody> </table>															2024	BW	200	400	600	MCW	MILK	SC	DC	EMA	Rib	Rump	IMF%	RBV%	NFI	SRF	SRG	SRW	EBV	+0.3	+18	+27	+26	+9	+5	+1.4	+6.0	-0.8	+0.0	+0.3	+0.4	-0.2	-0.06	+598	+148	+192	ACC	63%	62%	60%	64%	63%	50%	46%	30%	36%	46%	46%	35%	38%	37%				BREED	+1.2	+17	+25	+32	+35	+4	+0.8	-1.9	+0.4	-0.4	-0.5	+0.0	+0.3	-0.01	+398	+236	+234										
2024	BW	200	400	600	MCW	MILK	SC	DC	EMA	Rib	Rump	IMF%	RBV%	NFI	SRF	SRG	SRW																																																																															
EBV	+0.3	+18	+27	+26	+9	+5	+1.4	+6.0	-0.8	+0.0	+0.3	+0.4	-0.2	-0.06	+598	+148	+192																																																																															
ACC	63%	62%	60%	64%	63%	50%	46%	30%	36%	46%	46%	35%	38%	37%																																																																																		
BREED	+1.2	+17	+25	+32	+35	+4	+0.8	-1.9	+0.4	-0.4	-0.5	+0.0	+0.3	-0.01	+398	+236	+234																																																																															
Traits Observed: BWT 200WT(x2) 400WT 600WT MWT FAT EMA IMF Seller's remarks / Verkoper se kommentaar: 25 weke dragtig; Poenskop															R _____																																																																																	

ZIMEYER 19 16 **ZM1916C** **Lot. 4**

ZIMEYER BOERDERY (PTY) LTD H/a LOVEDALE BOERDERY, POSBUS 5 LINDLEY 9630 TEL:27823348906 SIMBRA

Birth Date: 13/03/2019 **Simbradex:** 90 **Star:** **Reg. Status:** REG **FEMALE/VROULIK**
 Age: 77 months **Days last calved:** 461 **ICP:** 480 **Inspection Date:** 19/01/2021
 Herdbook: F3 **Calvings:** 3 **Reg. No:** 172607756
 Horn: **Calving dates:** 24/05/2024 19/04/2023 08/10/2021



July 2025 South African Simbra BREEDPLAN

office@simbra.org

2024	BW	200	400	600	MCW	MILK	SC	DC	EMA	Rib	Rump	IMF%	RBV%	NFI	SRF	SRG	SRW
EBV	+2.1	+26	+37	+46	+51	+3	+1.1	+5.9	+0.3	-2.4	-2.5	-0.4	+1.3	-0.16	+163	-82	+95
ACC	77%	74%	73%	72%	71%	57%	34%	48%	65%	65%	47%	52%	34%				
BREED	+1.2	+17	+25	+32	+35	+4	+0.8	-1.9	+0.4	-0.4	-0.5	+0.0	+0.3	-0.01	+398	+236	+234

Traits Observed: BWT 200WT 400WT MWT FAT EMA DC

Seller's remarks / Verkoper se kommentaar:

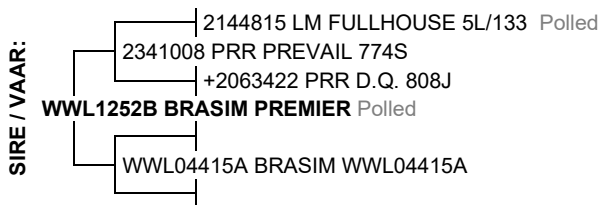
34 weke dragtig;

R _____

ZIMEYER 19 30 **ZM1930C** **Lot. 5**

ZIMEYER BOERDERY (PTY) LTD H/a LOVEDALE BOERDERY, POSBUS 5 LINDLEY 9630 TEL:27823348906 SIMBRA

Birth Date: 17/06/2019 **Simbradex:** 69, **Star:** **Reg. Status:** REG **FEMALE/VROULIK**
 Age: 74 months **Days last calved:** 465 **ICP:** 955 **Inspection Date:** 19/01/2021
 Herdbook: F3 **Calvings:** 2 **Reg. No:** 172624629
 Horn: Polled **Calving dates:** 20/05/2024 08/10/2021



July 2025 South African Simbra BREEDPLAN

office@simbra.org

2024	BW	200	400	600	MCW	MILK	SC	DC	EMA	Rib	Rump	IMF%	RBV%	NFI	SRF	SRG	SRW
EBV	+2.7	+27	+40	+47	+46	+0	+2.6	+3.3	-0.9	-1.0	-1.0	-0.3	+0.4	-0.18	+339	+26	+175
ACC	74%	72%	72%	71%	71%	54%	36%	46%	63%	63%	46%	50%	34%				
BREED	+1.2	+17	+25	+32	+35	+4	+0.8	-1.9	+0.4	-0.4	-0.5	+0.0	+0.3	-0.01	+398	+236	+234

Traits Observed: BWT 200WT 400WT MWT FAT EMA DC

Seller's remarks / Verkoper se kommentaar:

21 weke dragtig; Poenskop

R _____

ZIMEYER 21 13 **ZM2113** **Lot. 6**

ZIMEYER BOERDERY (PTY) LTD H/a LOVEDALE BOERDERY, POSBUS 5 LINDLEY 9630 TEL:27823348906 SIMBRA

Birth Date: 26/03/2021 **Simbradex:** 105 **Star:** **Reg. Status:** REG **FEMALE/VROULIK**
 Age: 53 months **Days last calved:** 666 **ICP:** **Inspection Date:** 15/02/2023
 Herdbook: SP **Calvings:** 1 **Reg. No:** 172915449
 Horn: Polled **Calving dates:** 01/11/2023



July 2025 South African Simbra BREEDPLAN

office@simbra.org

2024	BW	200	400	600	MCW	MILK	SC	DC	EMA	Rib	Rump	IMF%	RBV%	NFI	SRF	SRG	SRW
EBV	+2.8	+22	+29	+42	+47	+9	+0.0	--	+0.2	-0.4	-0.4	+0.0	+0.2	-0.20	+61	+38	-10
ACC	74%	72%	71%	72%	64%	52%	49%		33%	43%	43%	31%	36%	29%			
BREED	+1.2	+17	+25	+32	+35	+4	+0.8	-1.9	+0.4	-0.4	-0.5	+0.0	+0.3	-0.01	+398	+236	+234

Traits Observed: BWT 200WT 400WT(x2) 600WT(x2) MWT

Seller's remarks / Verkoper se kommentaar:

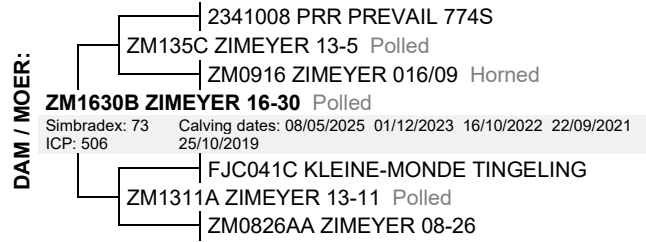
29 weke dragtig; Poenskop

R _____

ZIMEYER 21 30 **ZM2130C** **Lot. 7**

ZIMEYER BOERDERY (PTY) LTD H/a LOVEDALE BOERDERY, POSBUS 5 LINDLEY 9630 TEL:27823348906 SIMBRA

Birth Date: 22/09/2021 **Simbradex:** 90 **Star:** **Reg. Status:** REG **FEMALE/VROULIK**
 Age: 47 months **Days last calved:** 331 **ICP:** **Inspection Date:** 15/02/2023
 Herdbook: F3 **Calvings:** 1 **Reg. No:** 172915647
 Horn: Polled **Calving dates:** 01/10/2024



July 2025 South African Simbra BREEDPLAN

office@simbra.org

2024	BW	200	400	600	MCW	MILK	SC	DC	EMA	Rib	Rump	IMF%	RBV%	NFI	SRF	SRG	SRW
EBV	+1.6	+22	+31	+42	+38	+7	+1.2	+0.9	-0.2	-0.1	+0.1	+0.0	+0.2	-0.03	+330	+179	+148
ACC	76%	72%	72%	73%	65%	50%	39%	39%	62%	62%	34%	47%	49%				
BREED	+1.2	+17	+25	+32	+35	+4	+0.8	-1.9	+0.4	-0.4	-0.5	+0.0	+0.3	-0.01	+398	+236	+234

Traits Observed: BWT 200WT(x2) 400WT 600WT(x2) FAT EMA DC NFI-F

Seller's remarks / Verkoper se kommentaar:

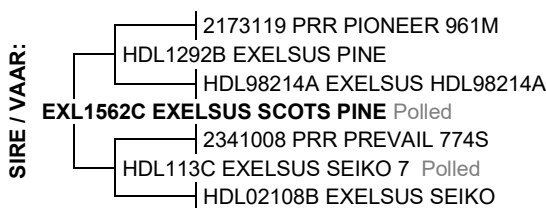
20 weke dragtig; Poenskop

R _____

ZIMEYER 21 56 **ZM2156** **Lot. 8**

ZIMEYER BOERDERY (PTY) LTD H/a LOVEDALE BOERDERY, POSBUS 5 LINDLEY 9630 TEL:27823348906 SIMBRA

Birth Date: 12/10/2021 **Simbradex:** 106 **Star:** **Reg. Status:** REG **FEMALE/VROULIK**
 Age: 46 months **Days last calved:** 471 **ICP:** **Inspection Date:** 15/02/2023
 Herdbook: SP **Calvings:** 1 **Reg. No:** 172915852
 Horn: Polled **Calving dates:** 14/05/2024



July 2025 South African Simbra BREEDPLAN

office@simbra.org

2024	BW	200	400	600	MCW	MILK	SC	DC	EMA	Rib	Rump	IMF%	RBV%	NFI	SRF	SRG	SRW
EBV	+0.5	+17	+25	+32	+29	+4	+1.2	-9.5	+1.0	+0.8	+0.9	+0.4	+0.2	+0.10	+890	+687	+590
ACC	76%	71%	71%	72%	62%	45%	42%	37%	60%	60%	45%	47%	46%				
BREED	+1.2	+17	+25	+32	+35	+4	+0.8	-1.9	+0.4	-0.4	-0.5	+0.0	+0.3	-0.01	+398	+236	+234

Traits Observed: BWT 200WT(x2) 400WT 600WT(x2) FAT EMA IMF DC NFI-F

Seller's remarks / Verkoper se kommentaar:

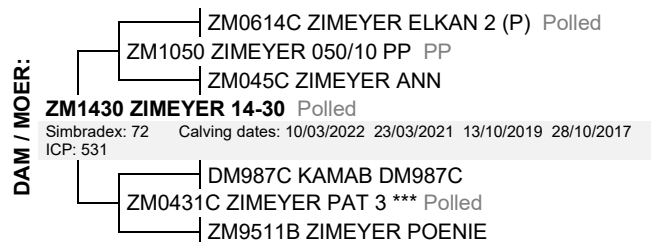
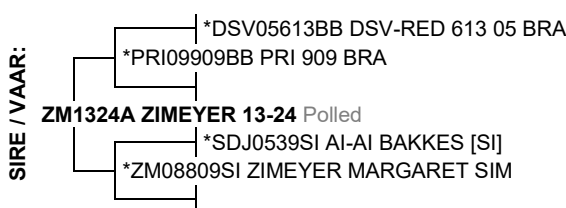
13 weke dragtig

R _____

ZIMEYER PAXTON **ZM1952B** **Lot. 9**

ZIMEYER BOERDERY (PTY) LTD H/a LOVEDALE BOERDERY, POSBUS 5 LINDLEY 9630 TEL:27823348906 SIMBRA

Birth Date: 13/10/2019 **DNA:** ZM1952B, SV **Reg. Status:** REG **MALE/MANLIK**
 Age: 70 months **Inspection Date:** 29/06/2022
 Herdbook: F2 **Reg. No:** 172671265
 Horn: Polled



July 2025 South African Simbra BREEDPLAN

office@simbra.org

2024	BW	200	400	600	MCW	MILK	SC	DC	EMA	Rib	Rump	IMF%	RBV%	NFI	SRF	SRG	SRW
EBV	+1.0	+10	+22	+29	+30	+1	+0.3	+4.5	+0.4	-1.9	-2.2	-0.1	+0.8	+0.12	+49	-30	-152
ACC	79%	77%	73%	71%	58%	40%	70%	33%	48%	55%	54%	40%	45%	56%			
BREED	+1.2	+17	+25	+32	+35	+4	+0.8	-1.9	+0.4	-0.4	-0.5	+0.0	+0.3	-0.01	+398	+236	+234

Traits Observed: BWT 200WT(x2) 400WT SS FAT EMA IMF NFI-P

Seller's remarks / Verkoper se kommentaar:

Bewese stoetbul; aanwins vir enige stoetteler

R _____

ZIMEYER 22 1	ZM221B	Lot. 10
ZIMEYER BOERDERY (PTY) LTD H/a LOVEDALE BOERDERY, POSBUS 5 LINDLEY 9630 TEL:27823348906		SIMBRA
Birth Date: 01/03/2022 DNA: ZM221, SV	Reg. Status: REG	MALE/MANLIK
Age: 41 months	Inspection Date: 19/05/2025	Reg. No: 172949679
Herdbook: F2		
Horn: Scurred		

<p>SIRE / VAAR:</p> <ul style="list-style-type: none"> ZM0614C ZIMEYER ELKAN 2 (P) Polled ZM1050 ZIMEYER 050/10 PP PP ZM045C ZIMEYER ANN ZM1633 ZIMEYER 16-33 P Polled ZM0443 ZIMEYER GILEAD 3 Polled ZM0962 ZIMEYER 062/09 ZM0536 ZIMEYER ELNA 	<p>DAM / MOER:</p> <ul style="list-style-type: none"> *PRI09909BB PRI 909 BRA ZM1324A ZIMEYER 13-24 Polled *ZM08809SI ZIMEYER MARGARET SIM ZM179A ZIMEYER 17 9 Polled Simbradex: 72 Calving dates: 24/04/2023 01/03/2022 10/10/2020(Ab) ICP: 463 ZM0826AA ZIMEYER 08-26
--	---

July 2025 South African Simbra BREEDPLAN office@simbra.org																	
2024	BW	200	400	600	MCW	MILK	SC	DC	EMA	Rib	Rump	IMF%	RBV%	NFI	SRF	SRG	SRW
EBV	+2.6	+24	+32	+44	+38	+3	+0.3	+1.4	+0.1	-1.0	-1.0	+0.1	+0.7	-0.15	+313	+214	+188
ACC	60%	66%	65%	62%	50%	38%	65%	28%	45%	51%	51%	37%	43%	49%			
BREED	+1.2	+17	+25	+32	+35	+4	+0.8	-1.9	+0.4	-0.4	-0.5	+0.0	+0.3	-0.01	+398	+236	+234

Traits Observed: BWT 200WT 400WT(x2) SS FAT EMA IMF NFI-F

Seller's remarks / Verkoper se kommentaar:
Medium raam bul; scurs; curvebender; puik NFI met goeie karkasgroei

R

RVT22734C	RVT22734C	Lot. 11
ZIMEYER BOERDERY (PTY) LTD H/a LOVEDALE BOERDERY, POSBUS 5 LINDLEY 9630 TEL:27823348906		SIMBRA
Birth Date: 29/08/2022 DNA: RVT22734, SV	Reg. Status: REG	MALE/MANLIK
Age: 35 months	Inspection Date: 05/08/2025	Reg. No: 173111204
Herdbook: F3		
Horn:		

<p>SIRE / VAAR:</p> <ul style="list-style-type: none"> *GH0290 BLENHEIM RUBEN [SIM] BW0627A BOSWALD RUBE (P) 27/06 Polled BW985A BOSWALD BEVOS 5 98 BE1446B BLEKA ROOIES Polled VOV047C TAUDICUS GENEIOUS Polled BE10151 BLEKA GENIE-LUX Polled BE06191C BLEKA BE06191C 	<p>DAM / MOER:</p> <ul style="list-style-type: none"> ZM0614C ZIMEYER ELKAN 2 (P) Polled ZM0945 ZIMEYER 045/09 Polled ZM0413C ZIMEYER BETSA ZM16707B ZIMEYER 16-707 Simbradex: 63 Calving dates: 29/08/2022 23/11/2020 16/05/2019 ICP: 601 *VLB0529SI VLENSBURG HOMMEL P [SI] VLB07159A VLENSBURG 07159A Horned VLB04207A VLENSBURG VLB04207A **
--	--

July 2025 South African Simbra BREEDPLAN office@simbra.org																	
2024	BW	200	400	600	MCW	MILK	SC	DC	EMA	Rib	Rump	IMF%	RBV%	NFI	SRF	SRG	SRW
EBV	+1.8	+23	+32	+39	+33	+5	+2.0	+4.5	+0.6	-1.4	-1.8	-0.1	+1.0	-0.10	+316	+75	+154
ACC	68%	61%	59%	59%	54%	40%	45%	29%	31%	42%	42%	31%	34%	29%			
BREED	+1.2	+17	+25	+32	+35	+4	+0.8	-1.9	+0.4	-0.4	-0.5	+0.0	+0.3	-0.01	+398	+236	+234

Traits Observed: BWT 220WT (recorded not analysed) 400WT(x2) SS FAT EMA IMF-P

Seller's remarks / Verkoper se kommentaar:
Puik bul; self in stoet gebruik; Bleka Rooies seun

R

ZIMEYER 22 18	ZM2218C	Lot. 12
ZIMEYER BOERDERY (PTY) LTD H/a LOVEDALE BOERDERY, POSBUS 5 LINDLEY 9630 TEL:27823348906		SIMBRA
Birth Date: 25/09/2022 DNA: ZM2218C, SV	Reg. Status: REG	MALE/MANLIK
Age: 35 months	Inspection Date: 19/05/2025	Reg. No: 173009903
Herdbook: F3		
Horn: Scurred		

<p>SIRE / VAAR:</p> <ul style="list-style-type: none"> *GH0290 BLENHEIM RUBEN [SIM] BW0627A BOSWALD RUBE (P) 27/06 Polled BW985A BOSWALD BEVOS 5 98 BE1446B BLEKA ROOIES Polled VOV047C TAUDICUS GENEIOUS Polled BE10151 BLEKA GENIE-LUX Polled BE06191C BLEKA BE06191C 	<p>DAM / MOER:</p> <ul style="list-style-type: none"> 2474022 PRR PARAGON 318U ZM1314C ZIMEYER 13-14 Polled ZM0873 ZIMEYER ELSIE Horned ZM1634 ZIMEYER 16-34 Polled Simbradex: 81 Calving dates: 31/10/2024 17/10/2023 25/09/2022 05/10/2021 ICP: 466 26/09/2019 ZM0614C ZIMEYER ELKAN 2 (P) Polled ZM1026 ZIMEYER 026/10 Horned ZM049C ZIMEYER WREN
--	---

July 2025 South African Simbra BREEDPLAN office@simbra.org																	
2024	BW	200	400	600	MCW	MILK	SC	DC	EMA	Rib	Rump	IMF%	RBV%	NFI	SRF	SRG	SRW
EBV	+1.1	+24	+19	+25	+15	+5	+1.7	-2.0	-1.1	+0.6	+0.7	+0.2	-0.3	+0.02	+481	+302	+571
ACC	73%	71%	70%	67%	57%	40%	70%	31%	46%	53%	52%	30%	43%	49%			
BREED	+1.2	+17	+25	+32	+35	+4	+0.8	-1.9	+0.4	-0.4	-0.5	+0.0	+0.3	-0.01	+398	+236	+234

Traits Observed: BWT 200WT 400WT(x2) SS FAT EMA IMF-F

Seller's remarks / Verkoper se kommentaar:
Dik mediumraam Bleka Rooies seun; hoogs aanbeveel vir speenkalfprodusent; goeie vrugbaarheids TW's

R

ZIMEYER 22 24 ZM2224 **Lot. 13**

ZIMEYER BOERDERY (PTY) LTD H/a LOVEDALE BOERDERY, POSBUS 5 LINDLEY 9630 TEL:27823348906 SIMBRA

Birth Date: 04/10/2022 **DNA:** ZM2224C, SV **Reg. Status:** REG **MALE/MANLIK**
Age: 34 months **Inspection Date:** 19/05/2025 **Reg. No:** 173009960
Herdbook: SP
Horn: Disbudded

SIRE / VAAR:

- 2439924 PRR PALISADE 813T
- HDL1178C EXELSUS PALISADE Scurred
- AZ0598B ZAMUGO SALOME 1 *
- DTM16186C DELFTKOM GOGETTER Polled**
- WC0777A WISP-WILL CADO Polled
- DTM10116B DELFTKOM MONTI WINNER P Polled
- JDJ0539C MARIMBRA MATILDA

DAM / MOER:

- FM9950C FANIE-MARE FM9950C
- FM06155C STEFMAR FM06155C Horned
- FM9969B FANIE-MARE FM9969B *
- FM09197 STEFMAR FM09197 * Horned**
- Simbradex: 80 Calving dates: 04/10/2022 06/10/2021 21/10/2020 24/03/2019
- ICP: 456 18/10/2017 06/02/2016 08/10/2014 07/09/2013 09/10/2012
- BIN97121C SONBRI DE LUX
- FM00156C STEFMAR FM00156C ***
- FM95147B FANIE-MARE FM95147B

July 2025 South African Simbra office@simbra.org
BREEDPLAN

2024	BW	200	400	600	MCW	MILK	SC	DC	EMA	Rib	Rump	IMF%	RBV%	NFI	SRF	SRG	SRW
EBV	+1.9	+25	+40	+47	+46	+7	+2.5	-0.1	+0.4	-2.7	-3.4	-0.1	+1.5	-0.05	+552	+237	+257
ACC	74%	72%	72%	68%	58%	47%	71%	25%	45%	53%	53%	30%	43%	25%			
BREED	+1.2	+17	+25	+32	+35	+4	+0.8	-1.9	+0.4	-0.4	-0.5	+0.0	+0.3	-0.01	+398	+236	+234

Traits Observed: BWT 200WT 400WT(x2) SS FAT EMA
Seller's remarks / Verkoper se kommentaar:
 Sterk bul uit FM koelilyn; TOP skrotum TW'e

R

ZIMEYER 22 27 ZM2227C **Lot. 14**

ZIMEYER BOERDERY (PTY) LTD H/a LOVEDALE BOERDERY, POSBUS 5 LINDLEY 9630 TEL:27823348906 SIMBRA

Birth Date: 13/10/2022 **DNA:** 18761U015, PV **Reg. Status:** REG **MALE/MANLIK**
Age: 34 months **Inspection Date:** 05/05/2025 **Reg. No:** 173010000
Herdbook: F3
Horn: Scurred

SIRE / VAAR:

- *GH0290 BLENHEIM RUBEN [SIM]
- BW0627A BOSWALD RUBE (P) 27/06 Polled
- BW985A BOSWALD BEVOS 5 98
- BE1446B BLEKA ROOIES Polled**
- VOV047C TAUDICUS GENEIOUS Polled
- BE10151 BLEKA GENIE-LUX Polled
- BE06191C BLEKA BE06191C

DAM / MOER:

- *PRI09909BB PRI 909 BRA
- ZM1324A ZIMEYER 13-24 Polled
- *ZM08809SI ZIMEYER MARGARET SIM
- ZM1928B ZIMEYER 19 28**
- Simbradex: 85 Calving dates: 10/10/2023 13/10/2022
- ICP: 362
- ZM1050 ZIMEYER 050/10 PP PP
- ZM1426 ZIMEYER 14-26 Polled
- ZM1150 ZIMEYER 050/11

July 2025 South African Simbra office@simbra.org
BREEDPLAN

2024	BW	200	400	600	MCW	MILK	SC	DC	EMA	Rib	Rump	IMF%	RBV%	NFI	SRF	SRG	SRW
EBV	+1.8	+22	+34	+38	+29	+4	+0.8	+1.3	+1.5	-2.2	-2.7	-0.2	+1.6	+0.02	+579	+247	+314
ACC	63%	69%	70%	65%	56%	38%	69%	28%	46%	54%	54%	29%	43%	49%			
BREED	+1.2	+17	+25	+32	+35	+4	+0.8	-1.9	+0.4	-0.4	-0.5	+0.0	+0.3	-0.01	+398	+236	+234

Traits Observed: BWT 200WT 400WT(x2) SS FAT EMA NFI-F
Seller's remarks / Verkoper se kommentaar:
 Puik bul; self in stoet gebruik; aanbeveel vir stoet; curvebender

R

ASHTONVALE JEMIEN AH2116 **Lot. 15**

ZIMEYER BOERDERY (PTY) LTD, H/a LOVEDALE BOERDERY POSBUS 5 LINDLEY 9630 TEL:27823348906 SIMMENTALER

Birth Date: 19/03/2021 **Simdex:** 59, **Star:** **Reg. Status:** REG **FEMALE/VROULIK**
Age: 53 months **Days last calved:** 334 **ICP:** **Inspection Date:** 19/05/2025 **Reg. No:** 103504429
Herdbook: SP **Calvings:** 1 **DNA:** 7523029868 PV
Horn: Polled **Calving dates:** 28/09/2024

SIRE / VAAR:

- UG0810 SALERIKA ECCO (P) Polled
- UG1225 SALERIKA UG1225 B Polled
- UG1013 SALERIKA UG10013 B Polled
- LN1690 TENDELE ZENA Polled**
- UG0938 SALERIKA BRANDER Polled
- UG1322 SALERIKA UG1322 Z Polled
- UG07243 SALERIKA UG07243 Z Polled

DAM / MOER:

- GH0782 BLENHEIM BALDI Polled
- RJB1387 WALKRAAL EVERT Polled
- FE0634 FRANMARI KARINA 3DE
- AH1823 ASHTONVALE Gini Polled**
- Simdex: 96 Calving dates: 19/03/2021
- ICP:
- AH1033 ASHTONVALE SAMPJE Horned
- AH1575 ASHTONVALE DALEEN *
- AH11102 ASHTONVALE TILLA Horned

July 2025 South African Simmentaler www.simmentaler.org
BREEDPLAN

2025	CED	CEM	BW	200	400	600	MCW	MILK	SC	DC	CWT	EMA	Rib	Rump	IMF%	RBV%	NFI P	SBI (R)	SPI (R)
EBV	+5.9	+0.8	+0.6	+19	+33	+35	+37	+6	+0.4	--	+21	--	--	--	--	--	--	+645	+593
ACC	41%	35%	69%	55%	53%	54%	52%	40%	31%		41%								
BREED	+0.4	+0.7	+1.6	+17	+27	+33	+35	+5	+0.3	-0.7	+19	+0.3	+0.0	+0.1	+0.1	+0.2	-0.03	+485	+473

Traits observed: CE BWT 600WT(x2)
Seller's remarks / Verkoper se kommentaar:
 29 weke dragtig; Poenskop

R

ZIMEYER ZM22804

ZM22804

Lot. 16

ZIMEYER BOERDERY (PTY) LTD, H/a LOVEDALE BOERDERY POSBUS 5 LINDLEY 9630 TEL:27823348906

SIMMENTALER

Birth Date: 07/11/2022 Simdex: Star: Reg. Status: CBK FEMALE/VROULIK
 Age: 33 months Days last calved: ICP: Not yet inspected
 Herdbook: SP Calvings: DNA: Reg. No: 103655577
 Horn:



July 2025 South African Simmentaler BREEDPLAN

Simmentaler SA-- www.simmentaler.org

2025	CED	CEM	BW	200	400	600	MCW	MILK	SC	DC	CWT	EMA	Rib	Rump	IMF%	RBV%	NFI P	SBI (R)	SPI (R)
EBV	+3.1	+1.8	+1.0	+15	+22	+28	+16	+4	-0.1	+0.1	+14	+0.2	+0.4	+0.6	+0.3	+0.0	--	+490	+492
ACC	34%	27%	57%	61%	62%	64%	57%	33%	35%	26%	48%	33%	51%	51%	28%	46%			
BREED	+0.4	+0.7	+1.6	+17	+27	+33	+35	+5	+0.3	-0.7	+19	+0.3	+0.0	+0.1	+0.1	+0.2	-0.03	+485	+473



Traits observed: BWT 200WT 400WT 600WT FAT EMA NFI-F

Seller's remarks / Verkoper se kommentaar:
17 weke dragtig

R _____

ZIMEYER 22 806

ZM22806

Lot. 17

ZIMEYER BOERDERY (PTY) LTD, H/a LOVEDALE BOERDERY POSBUS 5 LINDLEY 9630 TEL:27823348906

SIMMENTALER

Birth Date: 21/11/2022 Simdex: Star: Reg. Status: CBK FEMALE/VROULIK
 Age: 33 months Days last calved: ICP: Not yet inspected
 Herdbook: SP Calvings: DNA: Reg. No: 103675468
 Horn:



July 2025 South African Simmentaler BREEDPLAN

Simmentaler SA-- www.simmentaler.org

2025	CED	CEM	BW	200	400	600	MCW	MILK	SC	DC	CWT	EMA	Rib	Rump	IMF%	RBV%	NFI P	SBI (R)	SPI (R)
EBV	+2.5	+2.5	+1.6	+23	+39	+49	+37	+3	+0.2	-3.3	+25	+0.9	+0.1	+0.1	+0.7	--	+797	+665	
ACC	40%	32%	69%	66%	66%	68%	63%	43%	43%	36%	53%	37%	54%	54%	33%	49%			
BREED	+0.4	+0.7	+1.6	+17	+27	+33	+35	+5	+0.3	-0.7	+19	+0.3	+0.0	+0.1	+0.1	+0.2	-0.03	+485	+473



Traits observed: BWT 200WT 400WT 600WT FAT EMA NFI-F

Seller's remarks / Verkoper se kommentaar:
16 weke dragtig

R _____

ZIMEYER 22 810

ZM22810

Lot. 18

ZIMEYER BOERDERY (PTY) LTD, H/a LOVEDALE BOERDERY POSBUS 5 LINDLEY 9630 TEL:27823348906

SIMMENTALER

Birth Date: 08/12/2022 Simdex: Star: Reg. Status: REG FEMALE/VROULIK
 Age: 32 months Days last calved: ICP: Inspection Date: 19/05/2025
 Herdbook: SP Calvings: DNA: 7523030476 PV Reg. No: 103681391
 Horn: Horned



July 2025 South African Simmentaler BREEDPLAN

Simmentaler SA-- www.simmentaler.org

2025	CED	CEM	BW	200	400	600	MCW	MILK	SC	DC	CWT	EMA	Rib	Rump	IMF%	RBV%	NFI P	SBI (R)	SPI (R)
EBV	+2.5	+2.3	+1.7	+20	+31	+35	+25	+3	+0.2	-0.9	+21	+1.9	+0.1	+0.0	+0.1	+0.5	--	+654	+581
ACC	40%	34%	69%	65%	66%	67%	63%	41%	43%	37%	53%	38%	54%	54%	34%	49%			
BREED	+0.4	+0.7	+1.6	+17	+27	+33	+35	+5	+0.3	-0.7	+19	+0.3	+0.0	+0.1	+0.1	+0.2	-0.03	+485	+473



Traits observed: BWT 200WT 400WT 600WT FAT EMA NFI-F

Seller's remarks / Verkoper se kommentaar:
17 weke dragtig

R _____

SPRINGVALE STEFAN (TW)

MMM21115

Lot. 19

ZIMEYER BOERDERY (PTY) LTD, H/a LOVEDALE BOERDERY POSBUS 5 LINDLEY 9630 TEL:27823348906

SIMMENTALER

Birth Date: 12/05/2021 DNA: 7523030470, SV
Age: 51 months
Herdbook: SP
Horn: PP

Reg. Status: REG
Inspection Date: 28/06/2023

MALE/MANLIK
Sex of Twin: Male
Reg. No: 103513206



July 2025 South African Simmentaler BREEDPLAN

Simmentaler SA-- www.simmentaler.org

2025	CED	CEM	BW	200	400	600	MCW	MILK	SC	DC	CWT	EMA	Rib	Rump	IMF%	RBV%	NFI P	SBI (R)	SPI (R)
EBV	+2.3	+2.0	+0.3	+18	+29	+30	+23	+6	+1.2	-1.6	+16	+0.4	+0.3	+0.3	+0.1	-0.1	-0.11	+542	+531
ACC	51%	46%	68%	60%	59%	60%	59%	55%	52%	43%	52%	40%	45%	45%	42%	45%	39%		
BREED	+0.4	+0.7	+1.6	+17	+27	+33	+35	+5	+0.3	-0.7	+19	+0.3	+0.0	+0.1	+0.1	+0.2	-0.03	+485	+473



Traits observed: BWT 200WT

Seller's remarks / Verkoper se kommentaar:

Homosigotiese poenskap; Salerika Buurman seun; Medium raam dier met puik AI-AI moederlyne; Puik NFI en indekse; curvebender; STOETBUL

R _____

SPRINGVALE PENDO

MMM21129

Lot. 20

ZIMEYER BOERDERY (PTY) LTD, H/a LOVEDALE BOERDERY POSBUS 5 LINDLEY 9630 TEL:27823348906

SIMMENTALER

Birth Date: 14/09/2021 DNA: 7523030471, SV
Age: 47 months
Herdbook: SP
Horn: Polled

Reg. Status: REG
Inspection Date: 28/06/2023

MALE/MANLIK
Reg. No: 103556544



July 2025 South African Simmentaler BREEDPLAN

Simmentaler SA-- www.simmentaler.org

2025	CED	CEM	BW	200	400	600	MCW	MILK	SC	DC	CWT	EMA	Rib	Rump	IMF%	RBV%	NFI P	SBI (R)	SPI (R)
EBV	+3.8	+2.7	-0.2	+19	+30	+29	+21	+5	+0.9	-1.1	+16	+0.2	+0.1	+0.1	+0.0	+0.1	-0.12	+595	+562
ACC	48%	43%	70%	64%	61%	61%	60%	51%	48%	41%	52%	39%	44%	43%	41%	43%	37%		
BREED	+0.4	+0.7	+1.6	+17	+27	+33	+35	+5	+0.3	-0.7	+19	+0.3	+0.0	+0.1	+0.1	+0.2	-0.03	+485	+473



Traits observed: BWT 200WT

Seller's remarks / Verkoper se kommentaar:

Poenskap Salerika Buurman seun; puik indekse; besondere NFI

R _____

SONBRI LIZZY 51ST

BIN2217

Lot. 21

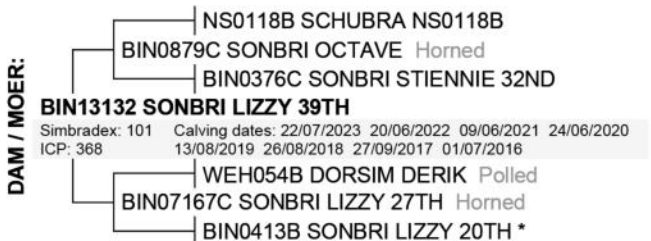
ZIMEYER BOERDERY (PTY) LTD H/a LOVEDALE BOERDERY, POSBUS 5 LINDLEY 9630 TEL:27823348906

SIMBRA

Birth Date: 20/06/2022 Simbradex: Star:
Age: 38 months Days last calved: ICP:
Herdbook: SP Calvings:
Horn: Disbudded Calving dates:

Reg. Status: REG
Inspection Date: 19/05/2025

FEMALE/ROULIK
Reg. No: 172985723



July 2025 South African Simbra BREEDPLAN

office@simbra.org

2024	BW	200	400	600	MCW	MILK	SC	DC	EMA	Rib	Rump	IMF%	RBV%	NFI	SRF	SRG	SRW
EBV	+1.1	+21	+31	+49	+59	+6	+1.0	-4.8	--	--	--	--	--	-0.12	+389	+412	+264
ACC	74%	71%	70%	72%	62%	42%	25%	26%						44%			
BREED	+1.2	+17	+25	+32	+35	+4	+0.8	-1.9	+0.4	-0.4	-0.5	+0.0	+0.3	-0.01	+398	+236	+234



Traits Observed: BWT 200WT 400WT 600WT(x2) NFI-F

Seller's remarks / Verkoper se kommentaar:

29 weke dragtig;

R _____

SONBRI EDNA 64TH **BIN2218** **Lot. 22**

ZIMEYER BOERDERY (PTY) LTD H/a LOVEDALE BOERDERY, POSBUS 5 LINDLEY 9630 TEL:27823348906 **SIMBRA**

Birth Date: 21/06/2022 **Simbradex:** **Star:** **Reg. Status:** REG **FEMALE/VROULIK**
 Age: 38 months **Days last calved:** **ICP:** **Inspection Date:** 19/05/2025
 Herdbook: SP **Calvings:** **Reg. No:** 172985749
 Horn: Polled **Calving dates:**

SIRE / VAAR:

- BIN096C SONBRI PEDRO Horned
- BIN12161 SONBRI TOPFIN
- BIN0995C SONBRI CLARA 23RD Horned
- BIN1729 SONBRI YARROW**
- HDL0860 EXELSUS EL GUERRA Horned
- BIN1415 SONBRI LINKY 15TH
- BIN1184 SONBRI LINKY 13TH

DAM / MOER:

- HDL0860 EXELSUS EL GUERRA Horned
- BIN1516 SONBRI WILSON
- BIN1184 SONBRI LINKY 13TH *
- BIN189 SONBRI EDNA 59TH**
- Simbradex: 91 Calving dates: 04/08/2023 21/06/2022 27/11/2020
- ICP: 490
- BOE1063C BOETAN PAUL Horned
- BIN1597 SONBRI EDNA 53RD
- BIN0760C SONBRI EDNA 30TH *** Horned

July 2025 South African Simbra office@simbra.org
 BREEDPLAN

2024	BW	200	400	600	MCW	MILK	SC	DC	EMA	Rib	Rump	IMF%	RBV%	NFI	SRF	SRG	SRW
EBV	+0.6	+17	+16	+22	+25	+2	--	--	--	--	--	--	--	+0.13	+307	+221	+359
ACC	73%	70%	69%	71%	61%	37%								45%			
BREED	+1.2	+17	+25	+32	+35	+4	+0.8	-1.9	+0.4	-0.4	-0.5	+0.0	+0.3	-0.01	+398	+236	+234

Traits Observed: BWT 200WT 400WT 600WT(x2) NFI-F
Seller's remarks / Verkoper se kommentaar:
 25 weke dragtig; Poenskop

R _____

SONBRI FANCY 64TH **BIN2220** **Lot. 23**

ZIMEYER BOERDERY (PTY) LTD H/a LOVEDALE BOERDERY, POSBUS 5 LINDLEY 9630 TEL:27823348906 **SIMBRA**

Birth Date: 26/06/2022 **Simbradex:** **Star:** **Reg. Status:** REG **FEMALE/VROULIK**
 Age: 38 months **Days last calved:** **ICP:** **Inspection Date:** 19/05/2025
 Herdbook: SP **Calvings:** **Reg. No:** 172985756
 Horn: Disbudded **Calving dates:**

SIRE / VAAR:

- VLB09108B VLENSBURG TARKA Horned
- VLB13122B VLENSBURG 13122B
- VLB06129A VLENSBURG 06129A *** Horned
- BIN179C SONBRI YALE**
- BIN07142C SONBRI NOODLE Horned
- BIN1395 SONBRI CLARA 22
- BIN0952 SONBRI CLARA 21ST Horned

DAM / MOER:

- BIN0260B SONBRI INDEX
- BIN07142C SONBRI NOODLE Horned
- BIN0414B SONBRI SEBENA 14TH ***
- BIN13137 SONBRI FANCY 54TH** Polled
- Simbradex: 101 Calving dates: 01/08/2023 26/06/2022 24/06/2021 03/08/2020
- ICP: 364 02/08/2019 22/09/2018 04/11/2017 09/08/2016
- BIN05100B SONBRI LAWTON
- BIN09125C SONBRI FANCY 45TH Horned
- BIN0611C SONBRI FANCY 19TH

July 2025 South African Simbra office@simbra.org
 BREEDPLAN

2024	BW	200	400	600	MCW	MILK	SC	DC	EMA	Rib	Rump	IMF%	RBV%	NFI	SRF	SRG	SRW
EBV	+0.4	+18	+29	+37	+32	+7	+0.3	-0.7	--	--	--	--	--	-0.03	+574	+340	+264
ACC	75%	72%	71%	73%	64%	42%	26%	26%						45%			
BREED	+1.2	+17	+25	+32	+35	+4	+0.8	-1.9	+0.4	-0.4	-0.5	+0.0	+0.3	-0.01	+398	+236	+234

Traits Observed: BWT 200WT 400WT 600WT(x2) NFI-F
Seller's remarks / Verkoper se kommentaar:
 29 weke dragtig;

R _____

SPRINGVALE MMM2228C **MMM2228C** **Lot. 24**

ZIMEYER BOERDERY (PTY) LTD H/a LOVEDALE BOERDERY, POSBUS 5 LINDLEY 9630 TEL:27823348906 **SIMBRA**

Birth Date: 23/07/2022 **Simbradex:** **Star:** **Reg. Status:** REG **FEMALE/VROULIK**
 Age: 37 months **Days last calved:** **ICP:** **Inspection Date:** 19/05/2025
 Herdbook: F3 **Calvings:** **Reg. No:** 173171026
 Horn: Polled **Calving dates:**

SIRE / VAAR:

- ZM09607 ZIMEYER 607/09 Polled
- MMM15200 SPRINGVALE HENDRIK Polled
- BIG0969 BIGGARSAT NOOI BEN 0969 Polled
- MMM18255B SPRINGVALE 18255B** Polled
- *SDJ0539SI AI-AI BAKKES [SI]
- ZM12807A ZIMEYER BAKNES Polled
- ZM0929 ZIMEYER 029/09 Polled

DAM / MOER:

- FJC041C KLEINE-MONDE TINGELING
- MMM13254 SPRINGVALE TINGJANEVA Polled
- WC0388 WISP-WILL JANEVA (P) Polled
- MMM17250B SPRINGVALE MICHELLE** Polled
- Simbradex: 73 Calving dates: 23/07/2022 20/11/2020
- ICP: 610
- *ZM09905BB ZIMEYER 905 09 BRA
- MMM14263A SPRINGVALE MICHELLE Horned
- *ZM10612SI ZIMEYER MART SIM

July 2025 South African Simbra office@simbra.org
 BREEDPLAN

2024	BW	200	400	600	MCW	MILK	SC	DC	EMA	Rib	Rump	IMF%	RBV%	NFI	SRF	SRG	SRW
EBV	+1.3	+24	+33	+40	+37	--	--	--	--	--	--	--	--	-0.08	+581	+278	+355
ACC	54%	55%	57%	66%	53%									44%			
BREED	+1.2	+17	+25	+32	+35	+4	+0.8	-1.9	+0.4	-0.4	-0.5	+0.0	+0.3	-0.01	+398	+236	+234

Traits Observed: 600WT NFI-F
Seller's remarks / Verkoper se kommentaar:
 31 weke dragtig; Poenskop

R _____

SONBRI EDNA 64TH		BIN2232				Lot. 25			
ZIMEYER BOERDERY (PTY) LTD H/a LOVEDALE BOERDERY, POSBUS 5 LINDLEY 9630 TEL:27823348906								SIMBRA	
Birth Date: 24/08/2022		Simbradex:		Star:		Reg. Status: REG		FEMALE/VROULIK	
Age: 36 months		Days last calved:		ICP:		Inspection Date: 19/05/2025		Reg. No: 173003369	
Herdbook: SP		Calvings:		Calving dates:					
Horn: Disbudded									

<p>SIRE / VAAR:</p> <ul style="list-style-type: none"> └─ BIN096C SONBRI PEDRO Horned └─ BIN12161 SONBRI TOPFIN └─ BIN0995C SONBRI CLARA 23RD Horned BIN1729 SONBRI YARROW └─ HDL0860 EXELSUS EL GUERRA Horned └─ BIN1415 SONBRI LINKY 15TH └─ BIN1184 SONBRI LINKY 13TH 	<p>DAM / MOER:</p> <ul style="list-style-type: none"> └─ HDL0860 EXELSUS EL GUERRA Horned └─ BIN1516 SONBRI WILSON └─ BIN1184 SONBRI LINKY 13TH * BIN1814 SONBRI EDNA 60TH Simbradex: 88 Calving dates: 24/08/2022 06/11/2020 ICP: 656 └─ HDL0860 EXELSUS EL GUERRA Horned └─ BIN15164 SONBRI EDNA 54TH Polled └─ BIN11124 SONBRI EDNA 41ST
---	--

July 2025 South African Simbra BREEDPLAN office@simbra.org																	
2024	BW	200	400	600	MCW	MILK	SC	DC	EMA	Rib	Rump	IMF%	RBY%	NFI	SRF	SRG	SRW
EBV	+2.2	+36	+48	+56	+60	+4	--	--	--	--	--	--	--	-0.01	+868	+410	+609
ACC	73%	70%	69%	65%	56%	38%								46%			
BREED	+1.2	+17	+25	+32	+35	+4	+0.8	-1.9	+0.4	-0.4	-0.5	+0.0	+0.3	-0.01	+398	+236	+234

Traits Observed: BWT 200WT 400WT(x2) NFI-F
Seller's remarks / Verkoper se kommentaar:
 29 weke dragtig; R _____

SPRINGVALE MMM2236		MMM2236				Lot. 26			
ZIMEYER BOERDERY (PTY) LTD H/a LOVEDALE BOERDERY, POSBUS 5 LINDLEY 9630 TEL:27823348906								SIMBRA	
Birth Date: 01/09/2022		Simbradex:		Star:		Reg. Status: REG		FEMALE/VROULIK	
Age: 35 months		Days last calved:		ICP:		Inspection Date: 19/05/2025		Reg. No: 173171034	
Herdbook: SP		Calvings:		Calving dates:					
Horn: Polled									

<p>SIRE / VAAR:</p> <ul style="list-style-type: none"> └─ HDL09155C EXELSUS PRODIGY Polled └─ WC1229 WISP-WILL LEWIS 2 P Polled └─ WC0883C WISP-WILL LIANA P Polled MMM16319 SPRINGVALE 16319 Polled └─ WC0924B WISP-WILL LINO P Polled └─ WC136C WISP-WILL SUKIE 3 Disbudded └─ WC0727B WISP-WILL STEBU Horned 	<p>DAM / MOER:</p> <ul style="list-style-type: none"> └─ +1977758 HR POWER HOUSE 1 Polled └─ 2144815 LM FULLHOUSE 5L/133 Polled └─ +1809824 LM ROBS MUNECA 3E/89 Polled MMM13213C SPRINGVALE MARY Polled Simbradex: 69 Calving dates: 01/09/2022 28/01/2021 19/11/2019 02/10/2017 ICP: 539 05/10/2016 └─ ZM003C ZIMEYER VISSER Polled └─ ZM0749 ZIMEYER THANDI 2 Horned └─ ZM0253C ZIMEYER TINA 2
--	--

July 2025 South African Simbra BREEDPLAN office@simbra.org																	
2024	BW	200	400	600	MCW	MILK	SC	DC	EMA	Rib	Rump	IMF%	RBY%	NFI	SRF	SRG	SRW
EBV	+0.6	+21	+33	+40	+50	+4	+0.6	+2.0	+0.9	-1.0	-1.3	-0.2	+0.8	-0.11	+326	+63	+142
ACC	60%	59%	60%	68%	56%	37%			28%	35%	35%	30%	31%	46%			
BREED	+1.2	+17	+25	+32	+35	+4	+0.8	-1.9	+0.4	-0.4	-0.5	+0.0	+0.3	-0.01	+398	+236	+234

Traits Observed: 600WT NFI-F
Seller's remarks / Verkoper se kommentaar:
 29 weke dragtig; Poenskop; R _____

SONBRI POLLY 26TH		BIN2238				Lot. 27			
ZIMEYER BOERDERY (PTY) LTD H/a LOVEDALE BOERDERY, POSBUS 5 LINDLEY 9630 TEL:27823348906								SIMBRA	
Birth Date: 16/09/2022		Simbradex:		Star:		Reg. Status: REG		FEMALE/VROULIK	
Age: 35 months		Days last calved:		ICP:		Inspection Date: 19/05/2025		Reg. No: 173012246	
Herdbook: SP		Calvings:		Calving dates:					
Horn: Disbudded									

<p>SIRE / VAAR:</p> <ul style="list-style-type: none"> └─ VLB09108B VLENSBURG TARKA Horned └─ VLB13122B VLENSBURG 13122B └─ VLB06129A VLENSBURG 06129A *** Horned BIN179C SONBRI YALE └─ BIN07142C SONBRI NOODLE Horned └─ BIN1395 SONBRI CLARA 22 └─ BIN0952 SONBRI CLARA 21ST Horned 	<p>DAM / MOER:</p> <ul style="list-style-type: none"> └─ VLB09108B VLENSBURG TARKA Horned └─ VLB12144B VLENSBURG 12144B └─ VLB03203A VLENSBURG VLB03203A *** BIN1624C SONBRI POLLY 21ST Simbradex: 96 Calving dates: 13/10/2023 16/09/2022 22/07/2021 16/07/2020 ICP: 414 31/03/2019 └─ BIN0713 SONBRI NIXON Horned └─ BIN10116 SONBRI POLLY 19TH Horned └─ BIN0761C SONBRI POLLY 15TH Horned
---	--

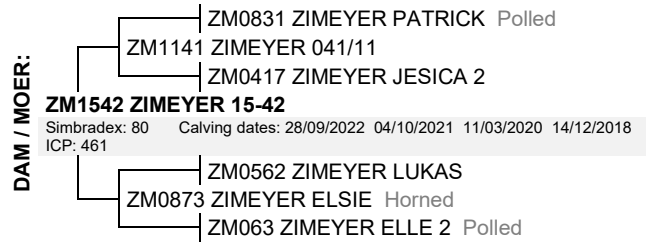
July 2025 South African Simbra BREEDPLAN office@simbra.org																	
2024	BW	200	400	600	MCW	MILK	SC	DC	EMA	Rib	Rump	IMF%	RBY%	NFI	SRF	SRG	SRW
EBV	+1.1	+23	+39	+48	+44	+6	+1.0	--	--	-1.0	-1.4	--	--	-0.03	+709	+398	+316
ACC	74%	69%	69%	66%	57%	39%			30%	25%	25%			42%			
BREED	+1.2	+17	+25	+32	+35	+4	+0.8	-1.9	+0.4	-0.4	-0.5	+0.0	+0.3	-0.01	+398	+236	+234

Traits Observed: BWT 200WT 400WT(x2) NFI-F
Seller's remarks / Verkoper se kommentaar:
 29 weke dragtig; R _____

ZIMEYER 22 21 **ZM2221C** **Lot. 28**

ZIMEYER BOERDERY (PTY) LTD H/a LOVEDALE BOERDERY, POSBUS 5 LINDLEY 9630 TEL:27823348906 SIMBRA

Birth Date: 28/09/2022 **Simbradex:** **Star:** **Reg. Status:** REG **FEMALE/VROULIK**
 Age: 35 months **Days last calved:** **ICP:** **Inspection Date:** 19/05/2025
 Herdbook: F3 **Calvings:** **Reg. No:** 173009911
 Horn: Polled **Calving dates:**



July 2025 South African Simbra BREEDPLAN

office@simbra.org

2024	BW	200	400	600	MCW	MILK	SC	DC	EMA	Rib	Rump	IMF%	RBV%	NFI	SRF	SRG	SRW
EBV	+2.2	+24	+36	+45	+46	+6	+3.1	-3.0	+1.2	-1.1	-1.5	+0.0	+1.1	-0.02	+609	+368	+369
ACC	74%	70%	70%	67%	58%	42%	48%	27%	34%	44%	33%	36%	34%				
BREED	+1.2	+17	+25	+32	+35	+4	+0.8	-1.9	+0.4	-0.4	-0.5	+0.0	+0.3	-0.01	+398	+236	+234

Traits Observed: BWT 200WT 400WT(x2)

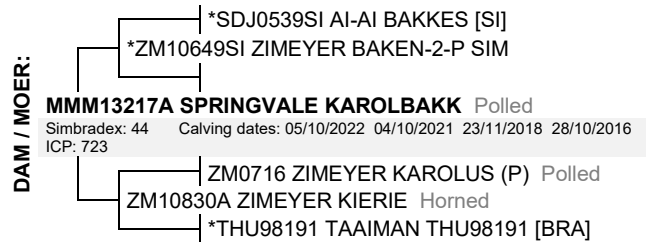
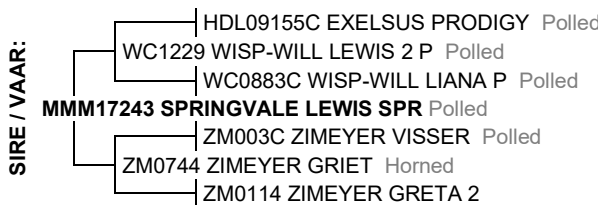
Seller's remarks / Verkoper se kommentaar:
29 weke dragtig; Poenskop

R _____

SPRINGVALE MMM2246B **MMM2246B** **Lot. 29**

ZIMEYER BOERDERY (PTY) LTD H/a LOVEDALE BOERDERY, POSBUS 5 LINDLEY 9630 TEL:27823348906 SIMBRA

Birth Date: 05/10/2022 **Simbradex:** 102 **Star:** **Reg. Status:** REG **FEMALE/VROULIK**
 Age: 34 months **Days last calved:** 77 **ICP:** **Inspection Date:** 19/05/2025
 Herdbook: F2 **Calvings:** 1 **Reg. No:** 173171059
 Horn: Polled **Calving dates:** 12/06/2025



July 2025 South African Simbra BREEDPLAN

office@simbra.org

2024	BW	200	400	600	MCW	MILK	SC	DC	EMA	Rib	Rump	IMF%	RBV%	NFI	SRF	SRG	SRW
EBV	+2.9	+28	+42	+56	+54	+4	+1.2	--	--	-0.7	-0.6	--	+0.7	-0.01	+475	+284	+239
ACC	59%	59%	59%	66%	54%	30%	27%			29%	29%		25%	43%			
BREED	+1.2	+17	+25	+32	+35	+4	+0.8	-1.9	+0.4	-0.4	-0.5	+0.0	+0.3	-0.01	+398	+236	+234

Traits Observed: 600WT NFI-F

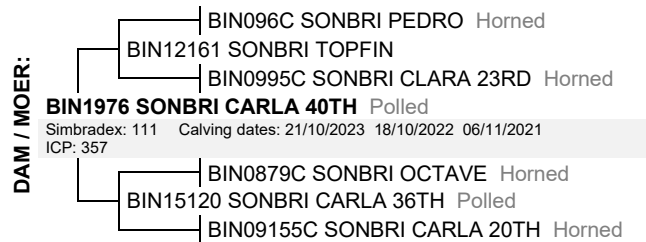
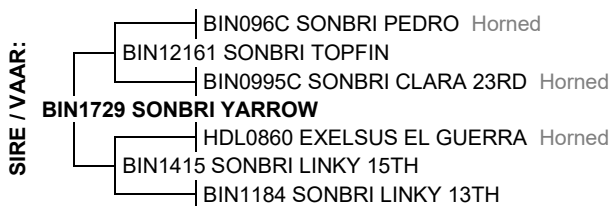
Seller's remarks / Verkoper se kommentaar:
met Vleisberg Digger verskalf ZM25127; Poenskop

R _____

SONBRI CARLA 50TH **BIN22102** **Lot. 30**

ZIMEYER BOERDERY (PTY) LTD H/a LOVEDALE BOERDERY, POSBUS 5 LINDLEY 9630 TEL:27823348906 SIMBRA

Birth Date: 18/10/2022 **Simbradex:** **Star:** **Reg. Status:** REG **FEMALE/VROULIK**
 Age: 34 months **Days last calved:** **ICP:** **Inspection Date:** 19/05/2025
 Herdbook: SP **Calvings:** **Reg. No:** 173012469
 Horn: Polled **Calving dates:**



July 2025 South African Simbra BREEDPLAN

office@simbra.org

2024	BW	200	400	600	MCW	MILK	SC	DC	EMA	Rib	Rump	IMF%	RBV%	NFI	SRF	SRG	SRW
EBV	+1.2	+20	+29	+40	+55	+0	--	--	--	--	--	--	--	+0.27	+460	+344	+330
ACC	74%	71%	70%	67%	57%	38%								47%			
BREED	+1.2	+17	+25	+32	+35	+4	+0.8	-1.9	+0.4	-0.4	-0.5	+0.0	+0.3	-0.01	+398	+236	+234

Traits Observed: BWT 200WT(x2) 400WT(x2) NFI-F

Seller's remarks / Verkoper se kommentaar:
29 weke dragtig; Poenskop

R _____

ZIMEYER 23 5		ZM235				Lot. 34	
ZIMEYER BOERDERY (PTY) LTD H/a LOVEDALE BOERDERY, POSBUS 5 LINDLEY 9630 TEL:27823348906							SIMBRA
Birth Date: 28/03/2023		Simbradex:		Star:		Reg. Status: REG	FEMALE/VROULIK
Age: 29 months		Days last calved:		ICP:		Inspection Date: 19/05/2025	Reg. No: 173077298
Herdbook: SP		Calvings:		Calving dates:			
Horn: Disbudded							

<p>SIRE / VAAR:</p> <ul style="list-style-type: none"> WC0051A WISP-WILL STAN 2 BEC1243B SANLEO STAN Polled JDJ0437A MARIMBRA MATTIE (P) BEC15144C SANLEO BEC15144C Polled FM07148 STEFMAR MIDNIGHT Horned BEC11151B SANLEO BEC11151B Polled BEC08305A SANLEO BEC08305A 	<p>DAM / MOER:</p> <ul style="list-style-type: none"> BEC0953C SANLEO RODELL Polled WC1522 WISP-WILL SIEG P Polled WC1161C WISP-WILL SINA P ** Polled ZM1740 ZIMEYER 17 40 Polled Simbradex: 55 Calving dates: 28/03/2023 12/04/2021 ICP: 715 ZM0833B ZIMEYER OTTEN (P) Polled ZM1181C ZIMEYER 081/11 ZM063 ZIMEYER ELLE 2 Polled
--	--

July 2025 South African Simbra BREEDPLAN office@simbra.org																	
2024	BW	200	400	600	MCW	MILK	SC	DC	EMA	Rib	Rump	IMF%	RBV%	NFI	SRF	SRG	SRW
EBV	+1.5	+18	+26	+38	+27	+7	+0.6	+0.2	-0.8	+0.0	+0.1	+0.2	-0.1	-0.12	+296	+239	+83
ACC	73%	70%	64%	59%	48%	48%	29%	31%	38%	28%	28%	31%	30%				
BREED	+1.2	+17	+25	+32	+35	+4	+0.8	-1.9	+0.4	-0.4	-0.5	+0.0	+0.3	-0.01	+398	+236	+234

Traits Observed: BWT 200WT
Seller's remarks / Verkoper se kommentaar:
 29 weke dragtig;

R

ZIMEYER 23 8		ZM238C				Lot. 35	
ZIMEYER BOERDERY (PTY) LTD H/a LOVEDALE BOERDERY, POSBUS 5 LINDLEY 9630 TEL:27823348906							SIMBRA
Birth Date: 02/04/2023		Simbradex:		Star:		Reg. Status: REG	FEMALE/VROULIK
Age: 28 months		Days last calved:		ICP:		Inspection Date: 19/05/2025	Reg. No: 173077751
Herdbook: F3		Calvings:		Calving dates:			
Horn: Polled							

<p>SIRE / VAAR:</p> <ul style="list-style-type: none"> 2341008 PRR PREVAIL 774S WWL1252B BRASIM PREMIER Polled WWL04415A BRASIM WWL04415A ZM1915C ZIMEYER ZM1915 Disbudded ZM0945 ZIMEYER 045/09 Polled ZM1337 ZIMEYER 13-37 Polled ZM0818 ZIMEYER GRIETA Horned 	<p>DAM / MOER:</p> <ul style="list-style-type: none"> ZM1050 ZIMEYER 050/10 PP PP ZM1633 ZIMEYER 16-33 P Polled ZM0962 ZIMEYER 062/09 ZM1942B ZIMEYER 19 42 Simbradex: 72 Calving dates: 02/04/2023 ICP: *ZM08811SI ZIMEYER DARIUS ZM1530A ZIMEYER 15-30 ZM0979A ZIMEYER 079/09 Horned
---	---

July 2025 South African Simbra BREEDPLAN office@simbra.org																	
2024	BW	200	400	600	MCW	MILK	SC	DC	EMA	Rib	Rump	IMF%	RBV%	NFI	SRF	SRG	SRW
EBV	+1.7	+21	+29	+38	+42	+0	+2.0	--	-0.5	-0.3	-0.1	+0.3	+0.2	+0.02	+299	+151	+162
ACC	70%	66%	58%	58%	46%	34%	44%		34%	43%	43%	32%	36%	34%			
BREED	+1.2	+17	+25	+32	+35	+4	+0.8	-1.9	+0.4	-0.4	-0.5	+0.0	+0.3	-0.01	+398	+236	+234

Traits Observed: BWT 200WT
Seller's remarks / Verkoper se kommentaar:
 21 weke dragtig; Poenskop

R

ZIMEYER 23 15		ZM2315				Lot. 36	
ZIMEYER BOERDERY (PTY) LTD H/a LOVEDALE BOERDERY, POSBUS 5 LINDLEY 9630 TEL:27823348906							SIMBRA
Birth Date: 19/04/2023		Simbradex:		Star:		Reg. Status: REG	FEMALE/VROULIK
Age: 28 months		Days last calved:		ICP:		Inspection Date: 19/05/2025	Reg. No: 173080789
Herdbook: SP		Calvings:		Calving dates:			
Horn: Polled							

<p>SIRE / VAAR:</p> <ul style="list-style-type: none"> WC0051A WISP-WILL STAN 2 BEC1243B SANLEO STAN Polled JDJ0437A MARIMBRA MATTIE (P) BEC15144C SANLEO BEC15144C Polled FM07148 STEFMAR MIDNIGHT Horned BEC11151B SANLEO BEC11151B Polled BEC08305A SANLEO BEC08305A 	<p>DAM / MOER:</p> <ul style="list-style-type: none"> 2341008 PRR PREVAIL 774S WWL1252B BRASIM PREMIER Polled WWL04415A BRASIM WWL04415A ZM1916C ZIMEYER 19 16 Simbradex: 90 Calving dates: 24/05/2024 19/04/2023 08/10/2021 ICP: 480 ZM0978A ZIMEYER 078/09 Polled ZM1349B ZIMEYER 13-49 Scurred ZM119A ZIMEYER ZM119A
--	--

July 2025 South African Simbra BREEDPLAN office@simbra.org																	
2024	BW	200	400	600	MCW	MILK	SC	DC	EMA	Rib	Rump	IMF%	RBV%	NFI	SRF	SRG	SRW
EBV	+3.1	+24	+32	+45	+41	+7	+0.6	+3.6	-0.5	-1.2	-1.1	-0.2	+0.5	-0.19	+52	-19	-5
ACC	73%	70%	65%	64%	58%	50%	51%	26%	34%	44%	44%	32%	35%	31%			
BREED	+1.2	+17	+25	+32	+35	+4	+0.8	-1.9	+0.4	-0.4	-0.5	+0.0	+0.3	-0.01	+398	+236	+234

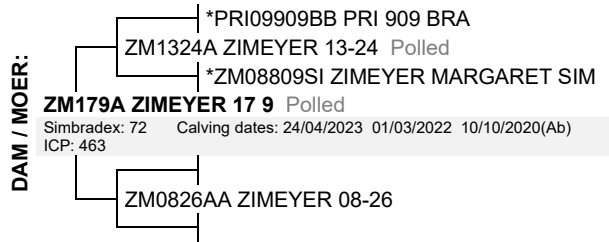
Traits Observed: BWT 200WT
Seller's remarks / Verkoper se kommentaar:
 oop vers; Poenskop

R

ZIMEYER 23 17 **ZM2317B** **Lot. 37**

ZIMEYER BOERDERY (PTY) LTD H/a LOVEDALE BOERDERY, POSBUS 5 LINDLEY 9630 TEL:27823348906 SIMBRA

Birth Date: 24/04/2023 **Simbradex:** **Star:** **Reg. Status:** REG **FEMALE/VROULIK**
 Age: 28 months **Days last calved:** **ICP:** **Inspection Date:** 19/05/2025
 Herdbook: F2 **Calvings:** **Reg. No:** 173084757
 Horn: Disbudded **Calving dates:**



July 2025 South African Simbra BREEDPLAN

office@simbra.org

2024	BW	200	400	600	MCW	MILK	SC	DC	EMA	Rib	Rump	IMF%	RBV%	NFI	SRF	SRG	SRW
EBV	+3.8	+21	+28	+41	+31	+7	+0.0	--	-0.3	-0.7	-0.3	-0.1	+0.3	-0.20	+33	+40	-51
ACC	73%	70%	63%	64%	55%	47%	48%		30%	36%	25%	29%	31%				
BREED	+1.2	+17	+25	+32	+35	+4	+0.8	-1.9	+0.4	-0.4	-0.5	+0.0	+0.3	-0.01	+398	+236	+234

Traits Observed: BWT 200WT

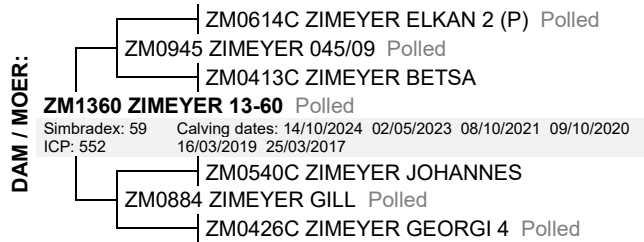
Seller's remarks / Verkoper se kommentaar:
oop vers;

R _____

ZIMEYER 23 18 **ZM2318** **Lot. 38**

ZIMEYER BOERDERY (PTY) LTD H/a LOVEDALE BOERDERY, POSBUS 5 LINDLEY 9630 TEL:27823348906 SIMBRA

Birth Date: 02/05/2023 **Simbradex:** **Star:** **Reg. Status:** REG **FEMALE/VROULIK**
 Age: 27 months **Days last calved:** **ICP:** **Inspection Date:** 19/05/2025
 Herdbook: SP **Calvings:** **Reg. No:** 173084765
 Horn: Polled **Calving dates:**



July 2025 South African Simbra BREEDPLAN

office@simbra.org

2024	BW	200	400	600	MCW	MILK	SC	DC	EMA	Rib	Rump	IMF%	RBV%	NFI	SRF	SRG	SRW
EBV	+1.4	+15	+23	+32	+29	+7	+0.7	+8.3	-0.3	-0.6	-0.8	+0.3	+0.2	-0.10	-8	-97	-219
ACC	74%	71%	65%	65%	59%	52%	51%	33%	35%	45%	45%	34%	37%	29%			
BREED	+1.2	+17	+25	+32	+35	+4	+0.8	-1.9	+0.4	-0.4	-0.5	+0.0	+0.3	-0.01	+398	+236	+234

Traits Observed: BWT 200WT

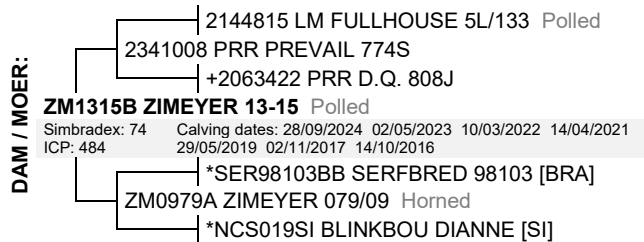
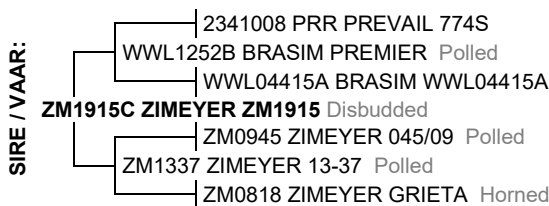
Seller's remarks / Verkoper se kommentaar:
oop vers; Poenskop

R _____

ZIMEYER 23 19 **ZM2319C** **Lot. 39**

ZIMEYER BOERDERY (PTY) LTD H/a LOVEDALE BOERDERY, POSBUS 5 LINDLEY 9630 TEL:27823348906 SIMBRA

Birth Date: 02/05/2023 **Simbradex:** **Star:** **Reg. Status:** REG **FEMALE/VROULIK**
 Age: 27 months **Days last calved:** **ICP:** **Inspection Date:** 19/05/2025
 Herdbook: F3 **Calvings:** **Reg. No:** 173084773
 Horn: Polled **Calving dates:**



July 2025 South African Simbra BREEDPLAN

office@simbra.org

2024	BW	200	400	600	MCW	MILK	SC	DC	EMA	Rib	Rump	IMF%	RBV%	NFI	SRF	SRG	SRW
EBV	-0.1	+20	+33	+40	+49	+1	+2.3	-5.5	+0.2	+0.2	+0.6	+0.1	+0.3	+0.08	+792	+478	+498
ACC	72%	69%	62%	62%	54%	42%	46%	33%	37%	46%	46%	37%	39%	34%			
BREED	+1.2	+17	+25	+32	+35	+4	+0.8	-1.9	+0.4	-0.4	-0.5	+0.0	+0.3	-0.01	+398	+236	+234

Traits Observed: BWT 200WT

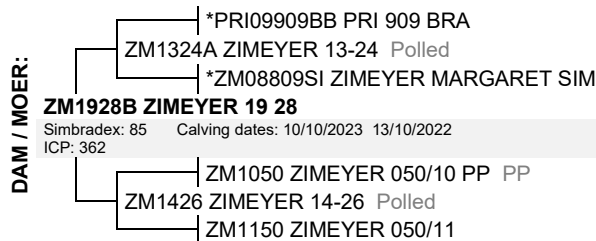
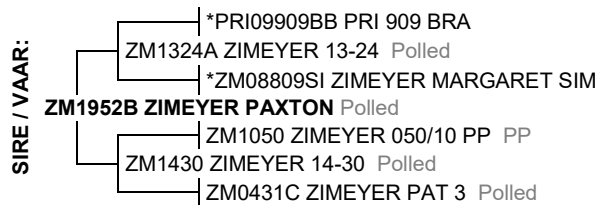
Seller's remarks / Verkoper se kommentaar:
oop vers; Poenskop

R _____

ZIMEYER 23 27 **ZM2327C** **Lot. 40**

ZIMEYER BOERDERY (PTY) LTD H/a LOVEDALE BOERDERY, POSBUS 5 LINDLEY 9630 TEL:27823348906 SIMBRA

Birth Date: 10/10/2023 **Simbradex:** **Star:** **Reg. Status:** REG **FEMALE/VROULIK**
 Age: 22 months **Days last calved:** **ICP:** **Inspection Date:** 19/05/2025
 Herdbook: F3 **Calvings:** **Reg. No:** 173125212
 Horn: Polled **Calving dates:**



July 2025 South African Simbra BREEDPLAN

office@simbra.org

2024	BW	200	400	600	MCW	MILK	SC	DC	EMA	Rib	Rump	IMF%	RBV%	NFI	SRF	SRG	SRW
EBV	-0.8	+10	+24	+26	+21	+2	+0.1	--	+0.4	-1.7	-2.0	+0.0	+0.9	+0.08	+409	+114	+39
ACC	72%	69%	62%	61%	52%	33%	47%		34%	43%	43%	29%	35%	37%			
BREED	+1.2	+17	+25	+32	+35	+4	+0.8	-1.9	+0.4	-0.4	-0.5	+0.0	+0.3	-0.01	+398	+236	+234

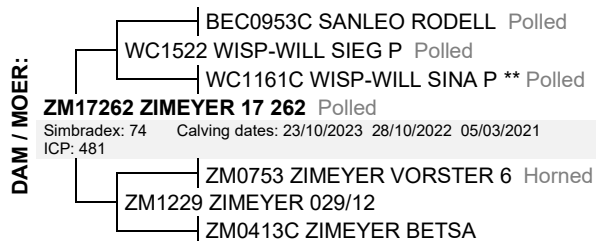
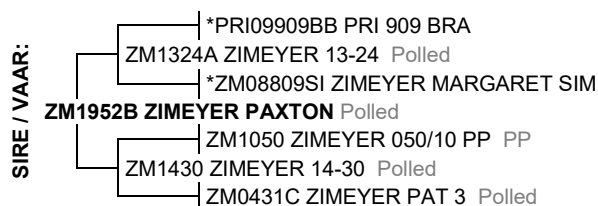
S Traits Observed: **BWT 200WT**
Seller's remarks / Verkoper se kommentaar:
 oop vers; Poenskop

R _____

ZIMEYER 23 37 **ZM2337C** **Lot. 41**

ZIMEYER BOERDERY (PTY) LTD H/a LOVEDALE BOERDERY, POSBUS 5 LINDLEY 9630 TEL:27823348906 SIMBRA

Birth Date: 23/10/2023 **Simbradex:** **Star:** **Reg. Status:** REG **FEMALE/VROULIK**
 Age: 22 months **Days last calved:** **ICP:** **Inspection Date:** 19/05/2025
 Herdbook: F3 **Calvings:** **Reg. No:** 173127531
 Horn: Disbudded **Calving dates:**



July 2025 South African Simbra BREEDPLAN

office@simbra.org

2024	BW	200	400	600	MCW	MILK	SC	DC	EMA	Rib	Rump	IMF%	RBV%	NFI	SRF	SRG	SRW
EBV	+0.9	+16	+30	+40	+38	+2	+1.4	+2.2	+0.0	-1.1	-1.5	+0.2	+0.5	+0.06	+355	+216	+37
ACC	59%	65%	59%	58%	49%	33%	45%	26%	32%	38%	37%	28%	32%	33%			
BREED	+1.2	+17	+25	+32	+35	+4	+0.8	-1.9	+0.4	-0.4	-0.5	+0.0	+0.3	-0.01	+398	+236	+234

S Traits Observed: **200WT**
Seller's remarks / Verkoper se kommentaar:
 oop vers

R _____

KOMMERSIËLE VERSE **Lot. 46-50**

ZIMEYER BOERDERY (PTY) LTD H/a LOVEDALE BOERDERY, POSBUS 5 LINDLEY 9630 TEL:27823348906 SIMBRA

FEMALE/VROULIK

Traits Observed:
Seller's remarks / Verkoper se kommentaar:
 dragtige kommersiele simbra verse

R _____

Zimeyer Boerdery Produksievelling (Lovedale), 28/08/2025

KOMMERSIËLE VERSE

Lot. 51-55

ZIMEYER BOERDERY (PTY) LTD H/a LOVEDALE BOERDERY, POSBUS 5 LINDLEY 9630 TEL:27823348906

SIMBRA

FEMALE/VROULIK

Traits Observed:

Seller's remarks / Verkoper se kommentaar:
dragtige kommersiele simbra verse

R _____

Zimeyer Boerdery Produksievelling (Lovedale), 28/08/2025

KOMMERSIËLE VERSE

Lot. 56-60

ZIMEYER BOERDERY (PTY) LTD H/a LOVEDALE BOERDERY, POSBUS 5 LINDLEY 9630 TEL:27823348906

SIMBRA

FEMALE/VROULIK

Traits Observed:

Seller's remarks / Verkoper se kommentaar:
dragtige kommersiele simbra verse

R _____

Zimeyer Boerdery Produksievelling (Lovedale), 28/08/2025

KOMMERSIËLE VERSE

Lot. 61-65

ZIMEYER BOERDERY (PTY) LTD H/a LOVEDALE BOERDERY, POSBUS 5 LINDLEY 9630 TEL:27823348906

SIMBRA

FEMALE/VROULIK

Traits Observed:

Seller's remarks / Verkoper se kommentaar:
dragtige kommersiele simbra verse

R _____

**TERMS AND CONDITIONS OF SALE IN RESPECT OF SALES BY
HENTIQ 2003 (PTY) LTD (1999/023915/07)
Trading as VLEISSENTRAAL BETHLEHEM**

(Hereinafter referred to as the "COMPANY")

1. All goods and livestock (hereinafter referred to as the "assets") are sold by the Company as agent on behalf of the Seller, who hereby authorises the Company to collect the purchase price from the Purchaser.
2. The Seller warrants that there are no encumbrances on such assets, that the said assets are the property of the Seller, and that the Seller is competent and legally entitled to dispose of the assets. The Seller further warrants as against the Purchaser that the assets are free of patent and latent defects
3. The Company accepts no liability for any withdrawal of assets from sale, or for any express or implied statements or guarantees which may be given verbally by its agents or employees, or by the Seller.
4. The Seller, who offers the assets for sale, accepts all liability regarding the information furnished as to pedigrees, ages, dates of service, state of health or gestation or any other particulars which might be incorrect. In the event of any dispute the Purchaser shall only have a claim against the Seller and not against the Company.
5. In the event that the Company agrees to finance the sale of the assets ("the finance agreement") then the following shall apply:
 - 5.1 The finance agreement shall only take effect upon payment by the Company to the Seller of an amount equal to the purchase price of the assets, less any amounts owing by the Seller to the Company in connection with the sale;
 - 5.2 Upon payment of the amount referred to in 5.1 above the Seller's right, title and interest in and to any claims and other rights as against the Purchaser in terms of or connected with the sale of the assets shall forthwith be ceded and transferred to the Company.
 - 5.3 Should the Purchaser refuse or otherwise fail to pay the purchase price within 7 days from the date of the payment referred to in clause 5.1 above, the Company shall be entitled to:
 - 5.3.1 claim interest from the Purchaser at the maximum rate permissible at the time in terms of the Usury Act 73 of 1968, calculated from date of purchase to date of settlement; and/or
 - 5.3.2 repossess the assets, to resell same at the risk of the defaulting Purchaser who shall be liable for all costs in connection with the resale and any loss or damage incurred and will not be entitled to any profit that may arise from the resale; and/or
 - 5.3.3 institute legal proceedings for the payment of any amount owing or for the return of the assets in which event the provisions of clause 5.3.2 will apply;
 - 5.3.4 recover the Company's legal costs calculated at the Attorney and own Client tariff as well as collection, tracing, storage and transport costs; and
 - 5.3.5 retain in pledge any assets or other property in the possession of the Company belonging to either the Purchaser or the Seller as security for the due fulfilment of any obligation owed by the relevant party to the Company.
6. The Seller warrants as against the Company that the assets are free of patent and latent defects and that any right or claim ceded to the Company in terms of these terms and conditions is free of any defect or right of deduction or set-off, and that the said right or claim is fully and immediately enforceable against the Purchaser.
7. The Purchaser shall not be entitled to withhold payment of the purchase price to the Company as a result of any possible or pending claim that he may have against the Seller on the grounds of misrepresentation or for any other reason whatsoever.
8. In the event where Purchasers must register at an Auction, and such a registered Purchaser allows another person to purchase on his buyers card, the registered Purchaser shall be liable for payment of such purchases. No bid by an unregistered Purchaser will be accepted by the Company and the Purchaser will have no claim to any of the assets allegedly purchased by him.
8. Subject to any reserve placed on any of the assets by the Seller, and the provisions of clause 12 and 13 below, the Purchaser at any sale shall be the highest bidder indicated by the Company's auctioneer by the fall of the hammer or by such other means as he may select.
10. All assets shall, immediately after the bid being knocked down, be deemed to have been delivered to the Purchaser.
11. All profit, loss or risk in the assets will pass to the Purchaser once it has been delivered to the Purchaser who shall at this own risk and expense remove it from the sale venue.
12. Should a cartage contractor remove any assets from the sale venue on instruction of the Company, the contractor will be deemed an agent of the Purchaser who accepts all costs and risks connected with such removal.
13. The auction shall take place under the exclusive control of the Company. The Company reserves the right, in its sole discretion, to refuse the bid of any person, to regulate the bidding, to indicate the highest bidder and to vary the order of the sale at any time without giving reasons therefore. If the auctioneer suspects that a bidder has not made a bona fide bid, or is unable to pay the purchase price or has not made satisfactory arrangements for payment of the purchase price, he may refuse to accept the bid of such bidder or accept it provisionally until the bidder has satisfied him that he is in position to pay the purchase price or that he has made satisfactory arrangements for payment thereof. On refusal of a bid under such circumstances the assets may immediately be re-auctioned.

14. In the event of a dispute arising amongst the bidders, the assets in dispute shall, at the sole discretion of the Company, be re-auctioned.
 15. The Company shall not be liable for loss or damages caused to, or sustained in respect of any action by, the Company or its helpers, employees or agents, notwithstanding an undertaking to care for or attend to, to despatch or deliver the assets. All assets are sold to the Purchaser "voetstoots" and the Company shall not be liable for any defects, latent or otherwise which might exist with or without the knowledge of the Company.
 16. The Purchaser shall, prior to the sale, ascertain whether there are any defects in the assets and any bid by a Purchaser shall be considered as acceptance of the assets with any patent or latent defects in their condition at the time of sale.
 17. The purchase price is payable in cash or payment by bank guaranteed cheque only. All payments for purchase must be made directly to the Company prior to removal of the assets, unless specific and satisfactory credit arrangement is confirmed in writing by the Company.
 18. The Company reserves the right to refuse any cheque as payment.
 19. Notwithstanding delivery, ownership of the purchased assets will not pass to the Purchaser until the full purchase price plus interest, if payable, is paid.
 20. Until payment of all amounts owing by the Purchaser are paid in full, the Purchaser hereby:
 - 20.1 irrevocably undertakes to identify the purchased assets in such a manner that he can at any time identify and indicate the assets deemed to be the property of, and pledged to, the Company.
 - 20.2 grants the Company access at all reasonable times to the premises where the assets are stored for the purposes of perfecting its pledge and exercising any other rights in terms of these terms and conditions.
 21. Where no finance agreement is entered into, on the fall of the hammer and subject to confirmation of the sale, the Seller in any event cedes and assigns all his rights, including the right to institute legal action and reclaim possession and/or ownership of the assets to the Company, who accepts cession and assignment thereof, in order for the Company to collect the purchase price. Should the Purchaser fail to pay the Company upon demand then the Company shall be entitled to exercise the rights set out in clauses 5.3.1 to 5.3.5 (both inclusive) above.
 22. The Purchaser and the Seller hereby consent to the jurisdiction of the Magistrate's Court in terms of Section 45 of the Act on Magistrate Court (Act 32 of 1944 as amended) for any action instituted by the Company against the Purchaser although the Company is entitled to institute litigation in any competent Court.
 23. The entries made in the Company's auction roll shall be prima facie evidence of the transaction and shall be binding on the Seller and the Purchaser.
 24. A certificate issued by a Manager of the Company shall be prima facie proof of monies owing by the Purchaser, or to the Seller or the Company.
 25. Any person who purchases on behalf of a principal must furnish the Company with a power of attorney prior to the commencement of the sale failing which he will personally be liable for payment of any purchases made by him. The person bidding on behalf of or signing any document on behalf of the Purchaser pursuant to a successful bid thereby binds himself personally as co-principal debtor with the Purchaser for payment of the purchase price and personally guarantees all the obligations of the Purchaser under these terms and conditions.
 26. Any extension of payment or concession granted by the Company to the Purchaser will not prejudice the rights of the Company in terms of these conditions and such extension or concession will not constitute an amendment or waiver or novation of these terms and conditions.
 27. All persons entering the sale venue do so at their own risk and the Company shall not be liable for any injuries, damages or losses of any nature whatsoever.
 28. The Company reserves the right to amend these conditions of sale in writing.
 29. Any assets entered or offered for sale on the day of the auction are subject to payment of the usual **[NOTE : BETTER TO SPECIFY % COMMISSION]** commission by the Seller to the Company at the rate customarily charged by the Company from time to time, whether the assets are sold at the auction or thereafter, with or without the knowledge of the Company, but as a result of this auction. Commission shall become due and payable by the Seller upon the fall of the hammer, notwithstanding any breach on the part of the Seller.
 30. In the event of registered vehicles being sold by the Company, it is a specific condition that the Company does not guarantee the information regarding the vehicles and does not undertake to furnish the transfer documents and registration certificates to the Purchaser.
- The Purchaser shall be responsible to obtain the aforementioned documents and shall not be entitled to withhold payment due to a failure on the part of either the Company or the Seller to furnish the documents.
31. Any agreement contrary to these conditions of sale shall not be binding unless it is confirmed in writing and signed by a Manager of the Company.



vk**b**

*Baie dankie vir u teenwoordigheid.
Reis veilig terug.*



FRANKFORT

AFSLAER Ian Grobbelaar 060 965 6207

BEMARKER Dano van Zyl 083 385 8285

EIENAAR Pieter Meyer 082 334 8906

VLEISSENTRAAAL FRANKFORT 058 813 1067 • frankfort@vleissentraal.co.za

TERME & VOORWAARDES GELD

